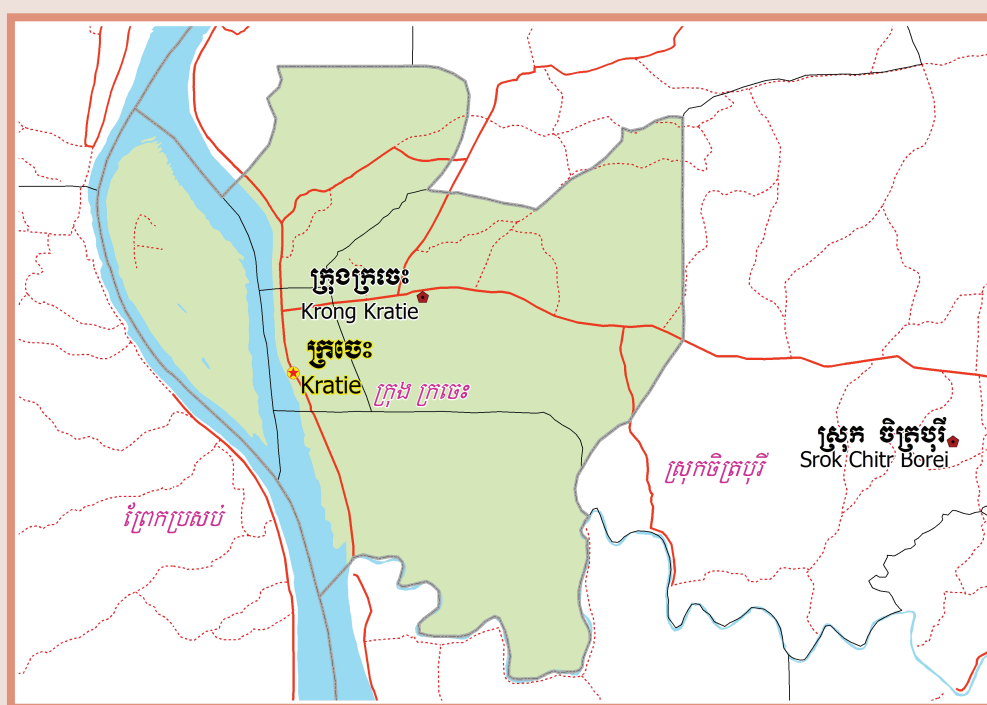


KINGDOM OF CAMBODIA
Nation Religion King



**National Committee for Sub-National
Democratic Development (NCDD)**



KRACHEH KRONG DATA BOOK 2009

Krong Code Nr: 1002
Kracheh Province

October 2009

Kracheh Krong Data Book 2009

District Code Nr: 1002

Kracheh Province

Table of Contents

List of Abbreviations	i
Glossary.....	ii
Preface	vi
Introduction	vii
SECTION A: GEOGRAPHY	1
1 Administration and Infrastructure.....	3
2 Land Use and Natural Resources.....	5
3 Geography	7
3.1 Land Area	7
3.2 Distances between Offices	7
SECTION B: DISTRICT PROFILE	9
1 General Information	11
1.1 Population of the District.....	11
1.2 Occupations	12
1.3 Property	14
2 Infrastructure and Economy.....	16
2.1 Roads in meters over 3 years.....	16
2.2 Sewerage Pipes in meters over 3 years.....	16
2.3 Drainage and Bridges	16
2.4 Services in the District	16
2.5 Agriculture.....	17
3 Social Aspects	27
3.1 Education	27
3.2 Health.....	32
3.3 Water and Sanitation	33
3.4 Vulnerable groups.....	37
3.5 Migration	39
4 Natural Resources and Environment (NRE).....	40
4.1 Families involved with NRE issues over 3 years	40
4.2 Percentage of Families involved with Natural Resource issues, by Commune, for 2008	40
4.3 Percentage Houses with access to Garbage collection and Families affected by environmental Pollution, by Commune, for 2008	40
4.4 Percentage Families using chemical Fertilizer and chemical Pesticides, by Commune, for 2008 ..	41
5 Administration and Security	41

5.1	Birth Registration across 3 years.....	41
5.2	Number of unregistered Infants born in 2008, by Commune	41
5.3	Registered criminal Cases over 3 years	41
5.4	Registered criminal Cases per 10,000 people, by Commune, for 2008.....	41
5.5	Number of registered Land Disputes, by Commune, in 2008	42
6	Gender	42
6.1	Registered Domestic Violence over 3 years.....	42
6.2	Percentage of registered cases of Families experiencing domestic Violence, by Commune, in 2008	42
6.3	Women's involvement over 3 years.....	42
6.4	Percentage of Female Participants in Civil Society and of 18-60 year women with uncertain Jobs, by Commune, in 2008	43
6.5	Female-headed Households over 3 years.....	43
6.6	Percentage female-headed Households and with Children of less than 5 years old, by Commune, in 2008	43
7	Indigenous People in the District	44
7.1	Ethnic Minorities in the District over 3 years.....	44
7.2	Other Minorities in the District over 3 years.....	44
	SECTION C: PLANS AND PROJECTS	45
8	Priorities and Plans	47
8.1	Priorities of Commune Councils for 2009 in the District by Sector	47
8.2	Temporary Agreements by Commune, for 2009	51
8.3	Outputs, estimated and actual costs of C/S Fund Projects between 2005 and 2008, by Commune	56
8.4	Total Expenditure on C/S Fund Projects by sector and commune between 2005 and 2008.....	57
8.5	Actual 2009 C/S Fund projects by Commune	57
9	District level Projects from 2006 to 2009	59
9.1	District Initiative Infrastructure Projects from 2006 to 2009	59
9.2	District Initiative Service Projects from 2006 to 2009	60
9.3	Inter Commune Council Projects in 2008 and 2009	62
9.4	Other Projects in 2008 and 2009	62
	SECTION D: SERVICES AND ORGANIZATIONS	63
10	Infrastructure.....	65
10.1	Length of and Expenditure on Roads in 2008, by District	65
10.2	Scale of and Expenditure on Irrigation in 2008, by District.....	65
10.3	Power Supply in 2008, by District	65
11	Health Facilities.....	66

11.1 Health Facilities in the Province, by Operational District.....	66
11.2 Health Facilities and Staff in the province, by Operational District.....	66
11.3 Deliveries in 2007 in the Province, by Operational District.....	67
12 Education	68
12.1 Schools, Classes, Students, Staff, for for all levels, for 2007/2008 by District.....	68
12.2 Characteristics of Schools and School Principals for 2007/2008 by Commune	68
12.3 Enrolment by Level of Education, 2006/2007 by Commune	69
12.4 Enrolment by Level of Education, 2007/2008 by Commune	69
12.5 Aspects of Enrolment for 2007/2008 by Commune.....	69
12.6 School Buildings for all schools in the District for 2007/2008, by Commune	70
12.7 Conditions of Classrooms and Existence of Separate School Office and Library, by Commune	70
12.8 Community Participation and Financing across all schools in the District for 2007/2008 by Commune	70
12.9 Percentage Student Flow Rates and Graduation by level 2006/2007, by Commune	71
13 Staff and Resources at the District	72
13.1 District Councilors elected in 2009	72
13.2 Committees of the Council.....	72
13.3 Board of Governors.....	72
13.4 Offices under Sala Krong, Sala Srok and Sala Khan	73
13.5 Municipality/District/Khan line offices.....	73
13.6 Properties and Equipment of District Administration	73
13.7 Registered Revenue of the District Administration in 2008	74
13.8 Services in the District	74
13.9 Civil Society Organizations active in the District.....	75
13.10 Private Sector Organizations.....	76
SECTION E: POVERTY DATA	77
14 Data on Poverty	79
14.1 Predicted Poverty Rates for 2009, by commune	79
14.2 Poverty data from survey.....	79

List of Abbreviations

#	Number
AGR	Agriculture
BR	Birth Registration
C. Pilot	Piloted Commune
C/S	Commune / Sangkat
CBO	Community-Based Organization
CDB	Commune Database
CDPD	Commune Development and Planning Database
CIP	Commune Investment plan
CLTS	Community Led-Total Sanitation
Comm.	Commune
Com Cov	Commune Covered
CPA	Complementary Package of Activities
CPS	Community Preschool
CCWC	Commune Committees for Women and Children
DANIDA	Danish International Development Agency
DDLG	Democratic Development and Local Governance Project (EC-UNDP)
DFID	Department For International Development (UK)
DIP	District Initiative Project
DIS	District Information System
District PDRD	District Office of Rural Development
District WP	District Work Plan
DIW	District Integration Workshop
DoLA	Department of Local Administration
Dr	Doctor
DWRM	District Office of Water Resource and Meterology
ECD	Early Childhood education (part of PE)
EMIS	Education Management Information System
Event IC	Celebration of International Days
FDH	Former District Hospital
GTZ	German Society for Technical Cooperation (Gesellschaft für Technische Zusammenarbeit GmbH)
Ha	Hectare
HC	Health Center
HC (NB)	Health Center (no building)
HH	Headed Household
HSI	Intervention for Health
HP	Health Post
HW	Hand Washing
ICC	Inter Commune Council
IFAD	International Fund for Agricultural Development
IND	Industry
Inter-commune	Inter-Commune Project Management Committee or Inter-commune project
IO	International Organization
LASED	Land Allocation for Socio-Economic Development
LGCR	Local Governance for Children's Rights
M&E	Monitoring and Evaluation
MA	Medical Assistant
MoEYS	Ministry of Education, Youth and Sports
MoH	Ministry of Health

MoP	Ministry of Planning
MPA	Minimum Package of Activities
MW1	Primary Midwives
MW2	Secondary Midwives
n/a	Not available
NCD	National Contracts Database
NCDD	National Committee for Sub-National Democratic Development
NGO	Non-Governmental Organization
NRML	Natural Resources Management and Livelihood
NU1	Primary Nurse
NU2	Secondary Nurse
OD	Operational District
ODF	Open Defecation Free
Ope. Costs	Operational Costs
Others	Other Staff
PBW	Public Works
PDoEYS	Provincial Department of Education, Youth and Sport
PDRD	Provincial Department of Rural Development
PDWRM	Provincial Department of Water Resource and Meteorology
PE	Parenting Education
PHAST	Participatory Hygiene and Sanitation Transformation
PHD	Provincial Health Department
PID	Project Information Database
PMC	Project Management Committee
Pop 04-05	Population Covered 2004 or 2005
PSDD	Project to Support Democratic Development through Decentralization and Deconcentration
RRD	Rural Road Development
RH	Referral Hospital
RILGP	Rural Investment and Local Governance Project
RPRP	Rural Poverty Reduction Program
RuLIP	Rural Livelihoods Improvement Program
SIDA	Swedish International Development Cooperation Agency
SPPA	Senior Provincial Program Advisor
TBA	Traditional Birth Attendant
UNDP	United Nations Development Project
UNICEF	United Nations Children's Fund
Vil	Village
Vil Cov	Village Covered
VIL-HC	Distance from Village to Health Center
WASH	Water, Sanitation and Hygiene
WRM	Water Resource and Meteorology

Glossary

C/S Fund: The Commune/Sangkat Fund is established and managed by the Government of Cambodia to provide financial support for development projects and administrative costs of Commune/Sangkat Councils. The amount is determined as a percentage of the National Budget (for 2009: 2.8% over the 2008 budget) and is expected to increase gradually over the years. The total 2009 budget under this fund is \$ 27,643,902 (of which \$ 19,272,170 is for Development Projects and \$ 8,371,731 for Administration). Under the Rural Investment and Local Governance Project the World Bank currently reimburses the costs of development projects if these meet the Bank's criteria.

CDB: the Commune Data Base is a national database, compiled by the Ministry of Planning, on the basis of detailed questionnaires, completed at village and commune level, which are then sent to the Departments of Planning for data entry. The most recent round of data collection took place at the end of 2008 (and is reflected in the District Data Books). Commune, District and Provincial Profiles can be generated from this database and should be available from provincial Departments of Planning.

CDPD: the Commune Development and Planning Database is a database maintained by Departments of Planning and Ministry of Planning, recording proposed activities as determined and prioritized by Commune and Sangkat Councils; the Temporary Agreements between these councils and supporting agencies, as decided at District Integration Workshops and details on projects that actually take place at commune, district and provincial levels.

CIP: The Commune Investment Plan is a rolling three-year plan, developed and decided by the Commune or Sangkat Council. It sets priorities and identifies the projects proposed for the years to come.

Commune and Sangkat (C/S): the Communes (in rural areas) and Sangkats (in urban areas) are the lowest and smallest units of local government. Councils are elected directly, once in five years, for the 1417 Communes and 204 Sangkats. In the C/S there are 14,119 villages, which have Village Chiefs, but don't constitute a formal level of local government.

DIP: the District Initiative Project is jointly supported by the MDLF (Multi-Donor Livelihood Facility (supporting the NRM&L Program)) and PSDD. In 2009 it covers 106 districts, 60% of the total in the country, with a budget of \$ 3.2 million. It is focused on capacity development in planning, democratic development, public competitive procurement, financial management and service delivery.

DIS: The District Information System is a national database maintained by NCDD, recording resources, staff, revenue, infrastructure and equipment available in the 193 Districts and Khans throughout the country. The last update took place in July 2009.

District, Municipality and Khan constitutes the third level of Government in Cambodia. There are 159 rural Districts, 26 Municipalities and 8 Khans of Phnom Penh Capital. They all have Councils which were, for the first time, elected in May 2009, by the Commune/Sangkat Councilors. These councils have a mandate for 5 years.

DIW: District Integration Workshops are held between July and October, to bring Commune/Sangkat Councils, looking for support for their projects, together with the governmental and non-governmental agencies that may provide support.

ICC: Inter Communes Council projects are executed in 10 provinces under the Democratic and Decentralized Local Governance Project (DDLG). This five year project (2006-2010) is executed by Ministry of Interior and funded by the European Commission and UNDP. The project focuses on improving dialogue partnership and accountability; create a network of Commune Councils at the provincial and national level and support and contribute to local area development for poverty reduction. The work under the ICC component supports investments and services formulated through inter-commune dialogue and planning.

MEDiCAM: A non-profit and non-partisan membership organization for NGOs active in Cambodia's health sector. It is the primary networking agency for health-related NGOs.

NCDD: the National Committee for sub-National Democratic Development is the inter-ministerial body charged with the implementation of the Organic Law (a key legislative document, adopted in 2008, outlining the envisaged decentralization). NCDD also channels substantial financial assistance by a number of Development Partners, to projects and programs at various levels. This amounted to over \$ 91 million in 2008. More information at: www.ncdd.gov.kh. This website also provides access to reports, manuals, legal documents, details on projects and more.

OD: the Operational Districts are the districts as defined and used by the Ministry of Health. These do not coincide with the 193 (Administrative) Districts and Khans, as used by all other RGC agencies. The Operational Districts are usually larger, and so there are 77 Operational Districts against 193 administrative Districts and Khans. However they do fit within the boundaries of administrative provinces.

PID: The Project Information Database is the database maintained by NCDD at national and sub national level, to follow all aspects of projects by Commune and Sangkat Councils, including the C/S Fund projects

Provincial Investment Fund (PIF)

The Provincial Investment Fund is allocated to all Provinces and Municipalities according to a population based formula. Part of the fund is earmarked for support to planning activities of the Provincial / Municipal Department of Planning; and to gender mainstreaming activities of the Provincial Department of Women's Affairs. The remaining "un-earmarked PIF" is allocated by PRDC to sectoral technical departments against established criteria and in response to proposals with prioritisation taking into account: priorities formulated by the CS Councils and aggregated by District into District Priority Activities Matrices (DPAM); alignment with national planning and poverty alleviation criteria, complementarity with other planned activities; and performance of the Department concerned in implementation of activities in previous years. With this provisional allocation, the Department then programs activities through the District Integration Process. Finally, the agreed activities, plus support costs amounting to no more than 25% of the total, are included in a sub-contract signed between PRDC and the Department, pursuant to the overall PSDD contract signed between NCDD and PRDC. Total budget has been around \$ 2 million per year.

Province: the 23 Provinces and Phnom Penh Capital City represent the 2nd layer of government. They vary in size, from very small, like Kep (approx. 36,000 people) and Pailin (approx. 70,000 people), or large but with small populations, like Mondulkiri (over 60,000 people), and Ratanakiri (over 153,000) to densely populated and large, like Kampong Cham (over 1.7 million people) and Kandal (approx. 1.4 Million people).

PSDD: the Project to Support Democratic Development through Decentralization and Deconcentration is funded by DFID (UK), SIDA (Sweden) and UNDP and runs from 2006 till the end of 2010 (including a one year extension). Annual budgets range from \$ 11 million to over \$ 18 million. The project provides core technical support to NCDD and to the provinces, financial support to the C/S Fund, District Initiative, Provincial Investment Fund and capacity building support through training, studies and advisory services.

RILGP: The Rural Investment and Local Governance Project is a World Bank funded project that provides substantial support to C/S Fund projects and to developing the required infrastructure, policies, systems and skills. It started in 2003 with a Loan for \$ 22 million for 2003-2007 and was then extended with a Grant of \$ 36 million for the period of 2007-2010. Discussions about a possible RILGP 2 are taking place between RGC and the World Bank.

RPRP: the Rural Poverty Reduction Project is a seven year project from 2004 till 2010, funded by IFAD and UNDP and implemented through the Ministry of Agriculture, Forestry and Fishery, supported by the Ministry of Interior and facilitated by NCDD. The project is active in the provinces Prey Veng and Svay Rieng and focuses on 120,600 households below poverty line. The objective is poverty reduction with the active participation of the poor through improved livelihoods, Strengthened capacity, Sustainable farming systems and natural resource management, new and/or rehabilitated infrastructure development, increase accessibly to technology, services and markets for their economic and social development.

RULIP: the Rural Livelihoods Improvement Project is implemented by the Ministry of Agriculture Forestry and Fisheries (MAFF)' Project Support Unit- PSU, with the NCDD playing the role of cooperating agency. Funded by IFAD and UNDP, the project will run till 2014. The target group consists of poor households who have little or even no land, few livestock or other assets and often many dependents. The main goal of the project is to directly or indirectly improve the livelihood systems, food security and incomes of a total of 33,900 rural poor, ethnic minority and female headed households in targeted village of Kratie, Preah Vihear and Ratanakiri provinces in a sustainable manner.

Seth Koma: The UNICEF funded Seth Koma program focuses on measurable action for children and women. During 2006 -2010 it is implemented in six provinces. Government and UNICEF pursue a set of inter-related goals, addressing critical stages of the life cycle of the child: a) Mothers have safe pregnancies and deliveries and healthy newborns; b) best possible start in life of infant; c) Children enter schools at the right age of six years; d) Children are protected from exploitation, abuse, violence, discrimination and other risks; and e) Youth and adolescents acquire life skills, express their views, participate in the decisions.

Preface

The Government of Cambodia attaches great importance to optimal use of scarce resources and to participatory planning and management at all levels. The Organic Law which was adopted in 2008 provides the legal context for further steps towards improving and decentralizing planning, management and monitoring, and towards greater accountability and transparency of institutions at sub-national levels.

The Government has established elected Councils at the sub-national levels, and we will progressively give them the responsibilities, together with the human and financial resources, to deliver a wide range of public services. They will be more democratic, more efficient, more transparent and accountable, better at addressing gender and other inequalities, and at fighting corruption. We recognize that development does not come from government alone; it needs the involvement of citizens, civil society and the private sector, and the new system will facilitate this.

A central element in this process is the availability of information on any aspect of development to all concerned parties. The newly elected Councillors at District and Khan level, line departments operating at these levels, but also NGOs, Development Partners, Commune Councillors and citizens throughout Cambodia need information on problems and requirements, resources and opportunities, services and agencies, plans and projects. They will need such information to better understand the present situation, set targets for the future, monitor progress, know what others are doing and to apply resources wisely and this is the reason the District Data books will be so valuable.

The District Data Books are a major step towards full transparency and towards informed planning and decision-making. They provide all available data at District, Khan, Commune and Sangkat level in easily accessible formats, in Khmer and English, through over 16,000 printed copies, CD-ROMs and the NCDD website.

This is the first time in Cambodia (and possibly in South East Asia) that such detailed information is made so widely available and NCDD should be commended for the hard work that has gone into this. We also thank the Ministry of Planning, which provided the detailed data of the Commune Data Base, the sectoral ministries and provincial authorities who contributed data and the Development Partners who provided financial support.

It is our sincere hope that the publication of the District Data Books will strengthen capacities, especially at district levels, for evidence-based development planning. We also hope that this information will deepen the understanding among Ministries, Provincial Authorities, Development Partners, NGOs and research agencies of the realities at commune and district levels.

We call upon all to use and distribute this information, complement or correct where appropriate and to contribute new data in the years to come.

Sar KHENG

Deputy Prime Minister, Minister of Interior and Chairman of NCDD

Introduction

Purpose

The purpose of the District Data Books is to bring together information on any aspect of life and development of Districts, Khans, Communes and Sangkat, together and make this widely available. The primary targets are the newly elected District Councilors, district level line departments, provincial agencies, Development Partners and NGOs operating at this level. They need detailed knowledge on current living conditions, natural resources, infrastructure, agriculture and other economic activities, current service levels, past and planned projects and available resources.

While much information exists on many of the above aspects, it is often hard to access that information and much is lost to reports, databases and statistics that are not widely shared. Data are often only available in one language and often out-of-date, and many reports cover only one sector or region.

We found that these problems are especially acute at the district level. Now that Districts are becoming a much more significant level of local government and development planning, there is an urgent need for wide-ranging data to be used for setting base-lines, planning and prioritizing, monitoring and learning.

Approach

We have attempted to identify and compile all available statistics, reports, maps and other data at district and/or commune level. From this we have selected information that is available for all or most districts, reasonably reliable and up-to-date, sufficiently detailed and of possible interest to development planners, decision makers, agencies and citizens.

The major sources of the information in these District Data Books are:

- a) The Commune Data Base information over the years 2006 to 2009 (the most recent data were collected late last 2008), as compiled by the Ministry of Planning
- b) Detailed information directly collected from the Ministry of Health, the Ministry of Education, Youth and Sports and (for maps) the Ministry of Land Management, Urban Planning and Construction
- c) The Project Information Database (PID) at NCDD (up-to-date)
- d) The Commune Development and Planning Database (CDPD) (up to date)
- e) The District Information System (DIS) (updated per Mid 2009)
- f) Direct data collection at provincial and district level on private sector, irrigation, roads, and electricity, through provincial agencies
- g) Medical data collected from MEDiCAM
- h) The ID Poor Project – for poverty data on a number of provinces and districts
- i) NCDD's work on predictive poverty rates
- j) Specific projects for outputs, plans and budgets (Seth Koma, RILGP, RPRP and ICC)

Limitations of the data

We are fully aware that the data we collected are not always complete, consistent or correct. While we have rejected information that was wrong or very incomplete, we decided not to aim for statistical and scientific perfection, but to include information that is useful, relevant

and comprehensive. We also accepted different sources for the same data as this may encourage discussion on the quality of the respective data.

We strongly encourage anyone who notes errors or incompleteness in these data to contact us and to share their data. We hope that the next round of producing such District Data Books can draw on wider sources and more complete data.

We encourage the District Administrations, who receive these data also in digital format, not only to use these for their planning and monitoring, but also to start correcting and updating these data and to share new data with NCDD for future use.

Contents

The information in the following pages is organized in five sections:

- a) **Geographical data:** this section provides maps on infrastructure and administration and on land use and natural resources management. These maps are also provided in large format to all Districts and Khans.
- b) **District Profile:** this presents wide ranging data, covering 2006 – 2009, at district and commune level, extracted from the Commune Data Base, but edited for better understanding.
- c) **Plans and Projects:** this section presents development priorities determined by Commune and Sangkat Councils, Temporary Agreements, outputs and expenditure of major projects at Commune and District level over 2006 – 2008 and plans and budgets for 2009.
- d) **Services and Organizations:** this section provides details on key infrastructure (roads, electricity, irrigation systems) and services in health and education at district and commune level. It also provides an inventory of resources at the District Administration, NGOs operating in the district and private sector agencies active in the district.
- e) **Poverty Data:** this section provides predicted poverty rates for 2009 for all districts and communes and detailed poverty data compiled and processed by the ID Poor project for those that have been covered by this project.

The future

It is our hope that this is the start of a longer-term process. We hope that a next edition of these District Data Books will offer more comprehensive, correct and up-to-date information. We hope that the District Administrations will not only start using this information, but also improve and update it. For this they are all provided with the full data set in digital format.

We invite agencies, projects and experts to send reports, statistics and maps that could be used for a next version to us and we invite all users of the District Data Books to inform us about errors, updates and inconsistencies. Please contact us through info@ncdd.gov.kh

We now invite you to browse through this data book. You may open this randomly or use the table of contents and go to the aspects that have your special interest.

We hope that you will be informed, surprised and assisted. We hope, above all, that this information will lead to a deeper understanding of causes and effects of poverty, to purposeful decisions on how to tackle those causes and to greater transparency in using scarce resources for the benefit of all.

Martin de Graaf
Program Advisor, PSDD/NCD

SECTION A: GEOGRAPHY

1 Administration and Infrastructure

Please see separate folder containing A3 maps.

2 Land Use and Natural Resources

Please see separate folder containing A3 maps

3 Geography

3.1 Land Area

Total Land Area (ha)	Forest Land Area (ha)		Cultivation Land Area (ha)	Construction Land Area (ha)	Other Land Area (ha)
	Total	Flooded Forest Area			
8856	0	0	0	0	0

3.2 Distances between Offices

Location	Distance (Km)
From District Office to C/S Office of Sangkat Roka Kandal	6

SECTION B: DISTRICT PROFILE¹

¹ All data in this section come from the Commune Database (CDB) unless otherwise specified. These include primarily new CDB data, collected late 2008, and some data from earlier years. Please note that percentages are rounded to the nearest whole number.

1 General Information

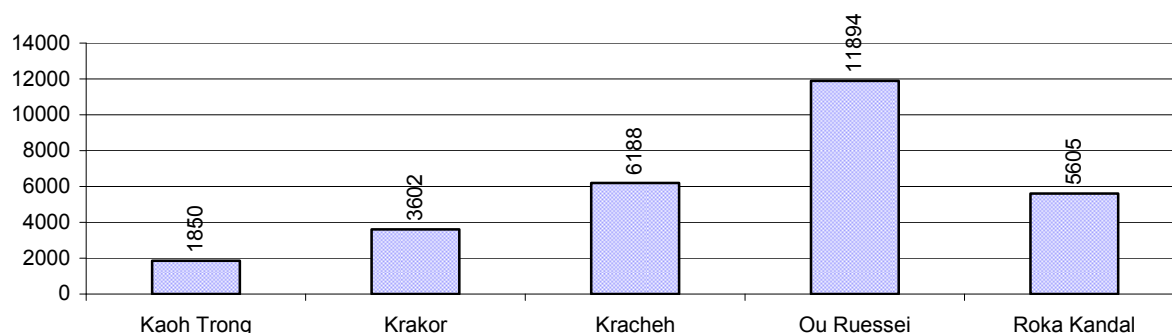
1.1 Population of the District

1.1.1 Total Population

Number of families	2005	2006	2007	2008
Total number of families	5,877 families	5,715 families	5,803 families	5,949 families
Increase (+)/Decrease (-) in nr of families		-3%	2%	3%
Total population	29,741 pers	28,392 pers	28,329 pers	29,139 pers
Increase (+)/Decrease (-) in nr of people		-5%	0%	3%
Number of female Headed Households (HH)	583 families	671 families	669 families	663 families

Note: Percentages of population and increase/decrease are calculated on basis of the previous year. A negative sign in front of the percentage indicates a decrease in population.

1.1.2 Population, by Commune, in 2008



1.1.3 Population, by Age Group, over 3 years

Population by age group	2006	2007	2008	
	%	%	%	Number
Age 0-5 years (as percentage of the population)	11%	11%	11%	3,214 persons
Male 0-5 yrs	48%	49%	49%	1,562 persons
Female 0-5 yrs	52%	51%	51%	1,652 persons
Age 6-17 (as percentage of the population)	30%	28%	28%	8,293 persons
Male 6-17 yrs	51%	50%	50%	4,123 persons
Female 6-17 yrs	49%	50%	50%	4,170 persons
Age 18-60 (as percentage of the population)	52%	53%	54%	15,792 persons
Male 18-60 yrs	50%	49%	50%	7,873 persons
Female 18-60 yrs	50%	51%	50%	7,919 persons
Age 61 above (as percentage of the population)	8%	7%	6%	1,840 persons
Male 61	40%	41%	40%	732 persons
Female 61	60%	59%	60%	1,108 persons

Note: The overall percentage for each age group is calculated on the basis of the total population. The gender distribution of each group is calculated on the basis of the population within that particular age group.

1.2 Occupations

1.2.1 Percentage of families with a particular Occupation over 3 years

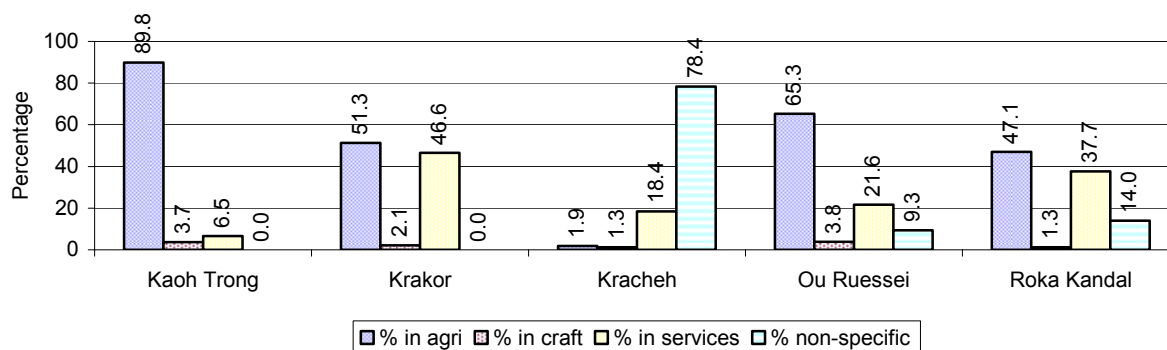
This table shows the percentage of the population who have a particular occupation (job), for example the percentage of the population in the district who are rice farmers, furniture crafter, trader, etc.

Description	2006	2007	2008	
	%	%	%	Number
Families whose main occupation is agriculture	47%	48%	46%	2,766 Families
Families whose primary occupation is rice farming	31%	36%	34%	2,015 Families
Families whose primary occupation is cultivating long-term crops	0%	0%	0%	17 Families
Families whose primary occupation is cultivating short-term crops	4%	3%	3%	203 Families
Families whose primary occupation is cultivating vegetable	4%	3%	4%	229 Families
Families whose primary occupation is fisherman	6%	4%	4%	227 Families
Families whose primary occupation is livestock farmer	1%	1%	1%	41 Families
Families whose primary occupation is NTFP collection	1%	1%	1%	34 Families
Families whose main occupation is craft work	3%	2%	3%	149 Families
Families, whose main occupation is in furniture craft, wooden, rattan, vine, bamboo	2%	2%	2%	93 Families
Families whose main occupation is in metal, aluminum, glass goods production	0%	0%	0%	15 Families
Families whose main occupation is food production	1%	1%	0%	29 Families
Families whose main occupation is tire, plastics and rubber goods production	0%	0%	0%	0 Families
Families whose main occupation is textile, clothing goods production	0%	0%	0%	0 Families
Families whose main occupation is in other production, not listed above	0%	0%	0%	12 Families
Families whose main occupation is services	25%	28%	26%	1,557 Families
Families whose main occupation is trade	12%	15%	14%	840 Families
Families whose main occupation is repair	3%	3%	2%	127 Families
Families whose main occupation is providing transport services	7%	5%	4%	240 Families
Families whose main occupation is providing other services	3%	6%	6%	350 Families
Families whose main occupation is not clear (or multi)	25%	22%	25%	1,477 Families

Note: The occupation percentages are calculated on the basis of the total number of families.

1.2.2 Percentage Families that work in one of four occupational sectors, by Commune in 2008

This table indicates the percentage of families involved in one of four occupation types: agriculture, craft, services or non-specific (other). Please note agriculture includes forestry activities such as cutting down trees and gathering gum from the trees.



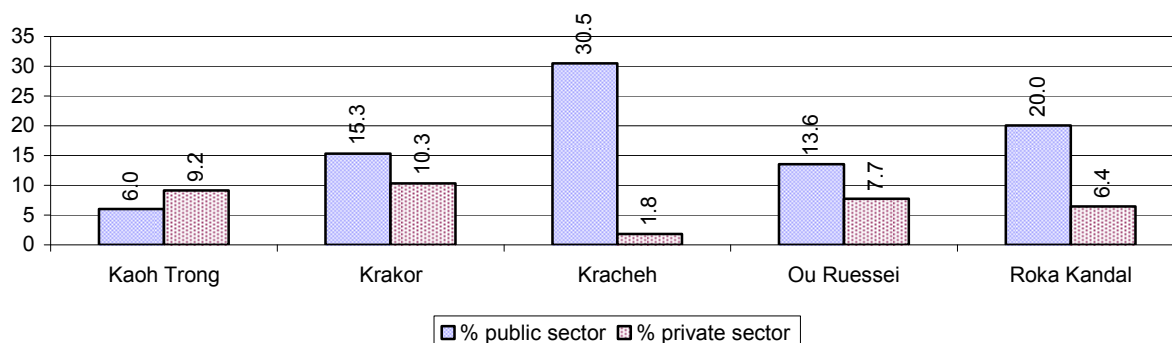
Note: Calculated on the basis of the total number of families within a commune.

1.2.3 Percentage of Families with public Sector, private Sector or uncertain Jobs, over 3 years

Description	2006	2007	2008	
	%	%	%	Number
Families that have a family member who is a government official, staff or worker	28%	25%	19%	1,103 families
Families that have a family member who is a private sector staff or worker	9%	9%	7%	388 families
Number of people aged 18-60 with uncertain/irregular jobs	2%	2%	1%	229 persons

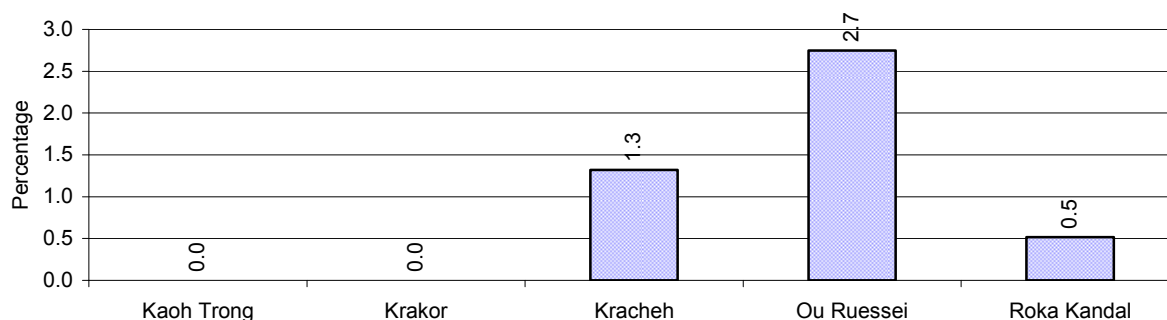
Note: In the first two rows percentages are calculated on the basis of the total number of families. In the third row the percentage is calculated on the basis of the total number of people aged 18-60 years.

1.2.4 Percentage of Families with public or private Sector Jobs, by Commune in 2008



Note: Calculated on the basis of the total number of families in the commune

1.2.5 Percentage of People aged 18-60 years with uncertain/irregular Jobs, by Commune, in 2008.



1.3 Property

1.3.1 Housing types and facilities over 3 years

This table shows the percentage of people living in a certain type of house. It also indicates how many houses have electricity or battery powered lights and how many have TV.

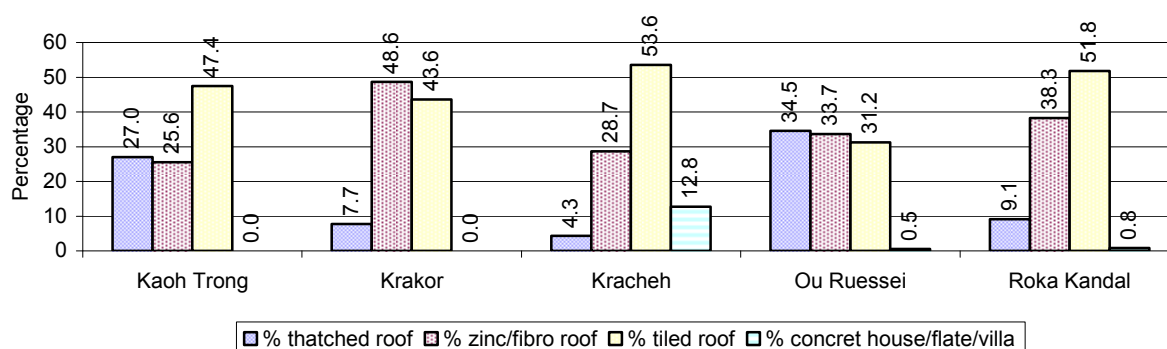
House Type	2006 %	2007 %	2008	
			%	Number
House with thatched roof	22 %	22 %	18 %	997 houses
House with zinc/fibro roof	30 %	31 %	35 %	1,898 houses
House with tiled roof	45 %	41 %	43 %	2,368 houses
Flats/apartments (with many families living)	2 %	5 %	1 %	81 houses
Concrete house or flat (with one family living)	2 %	2 %	2 %	126 houses
Villa house	0 %	0 %	0 %	2 houses
Houses with electricity	68 %	67 %	71 %	3,879 houses
Houses with battery light	27 %	26 %	27 %	1,457 houses
Houses with TV	74 %	73 %	77 %	4,211 houses

Note: Calculated against the total number of houses

1.3.2 Families living on public Land or without a permanent House

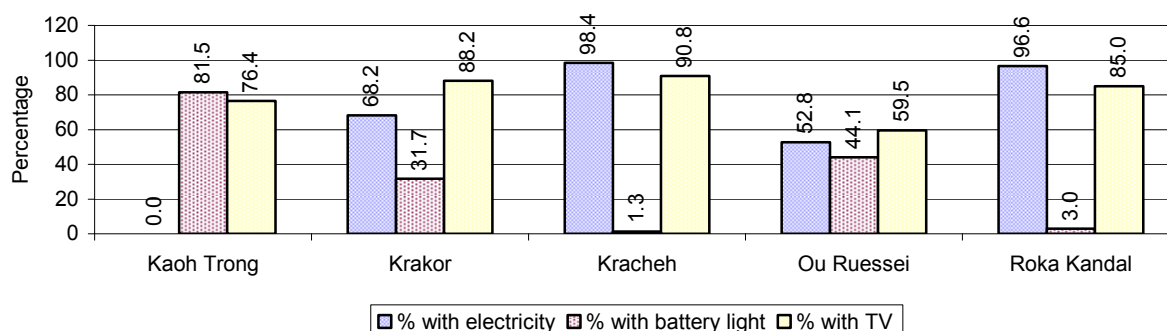
Living situation	2006	2007	2008
Families living in a house on public land	186 families	171 families	260 families
People, without permanent housing	11 person(s)	13 person(s)	4 person(s)

1.3.3 Percentage of Population living in a particular type of House, by Commune, in 2008



Note: Calculated against the total number of houses in each commune

1.3.4 Percentage of Houses with Electricity, Battery Lights and/or TVs, by Commune, in 2008



Note: Calculated against the total number of houses in each commune

1.3.5 Types of Vehicles and their ratio to Families across 3 years

This table shows the number of families per vehicle in the district. The last column shows the total number of each type of vehicle in the district for 2008.

Description	2006 ratio	2007 ratio	2008	
			Ratio	Number
Bicycle and bicycle with trailer	1	1	2	3,515
Ox-carts and horse-carts	6	6	6	1,015
Motorbike/with trailer	2	2	2	3,365
Motor tri-cycle	N/A	N/A	N/A	0
Large Transportation				
Total number of cars/trucks	18	18	18	336
Locally made vehicles	381	446	458	13
Trucks for goods transport	71	77	78	76
Buses/mini buses for passengers	102	132	127	47
Family cars	33	31	30	200
Agriculture machinery				
Tractors used for plowing	2,858	1,934	850	7
Power-tillage used for plowing	71	62	55	108
Other type of machinery				
Other type of machinery	212	967	661	9
Water transportation				
Row boats	12	14	15	389
Total number of motor boats	36	40	35	172
Motor boats used for fishing	41	44	40	147
Motor boats used for passengers	N/A	N/A	1,983	3
Motor boats used for goods transporting	286	446	270	22

Note: Ratio of families to a particular type of vehicle is the result of the total number of families divided by total number of that type of vehicle. Other types of vehicles, such as bulldozer, excavator, rollers etc. are not listed.

2 Infrastructure and Economy

2.1 Roads in meters over 3 years

Description	2006	2007	2008
Bituminous road	3,000 m	0 m	0 m
DBST, Macadam road	10,500 m	10,500 m	10,500 m
Concrete road	0 m	0 m	0 m
Laterite road	21,615 m	19,874 m	18,651 m
Constructed earth road	6,277 m	475 m	2,300 m
Un-constructed earth road	12,516 m	17,266 m	15,966 m

2.2 Sewerage Pipes in meters over 3 years

Description	Sewage pipe length		
	2006	2007	2008
Total length of sewage pipe, diameter 30-50 cm	208 m	214 m	234 m
Length of newly constructed sewage pipe, diameter 30-50 cm	48 m	6 m	20 m
Length of sewage pipe, diameter 30-50 cm needs repair/rehabilitation	32 m	32 m	32 m
Total length of sewage pipe, diameter of pipe 60-100 cm	128 m	53 m	668 m
Length of newly constructed sewage pipe, diameter 60-100 cm	0 m	5 m	620 m
Length of sewage pipe, diameter 60-100 cm needs repair/rehabilitation	0 m	0 m	0 m
Sewage pipe, diameter of pipe over 100 cm	60 m	5,100 m	0 m
Length of newly constructed sewage pipe, diameter over 100 cm	0 m	0 m	5 m
Length of sewage pipe, diameter over 100 cm needs repair/rehabilitation	0 m	0 m	0 m

2.3 Drainage and Bridges

Construction Type	2006		2007		2008	
	place(s)	Length	place(s)	Length	place(s)	Length
Single pipe culvert	37	530m	41	618 m	59	885 m
Double-pipe culvert	0	0m	1	6 m	2	6 m
Box pipe culvert	4	60m	8	114m	1	24 m
Wooden bridge	5	120m	2	32m	5	120 m
Concrete bridge	0	0m	2	9m	2	9 m
Bale bridge	0	0m	0	0m	0	0 m
Spillway construction	2	80m	0	0m	2	80 m

2.4 Services in the District

Descriptions	Number of places by year		
	2006	2007	2008
Public			
Electricity generating stations	1	2	2
Health clinics	6	7	6
Private			
Bicycle and motorcycle repair places	47	53	55
Agricultural machinery, tools and equipment repair places	19	25	22
Electronic tool repair places	12	12	12
Battery-charging services	11	8	8
Handicraft places, wooden furniture and forest by-products	40	48	31
Other handicraft places (excluding furniture)	9	9	2

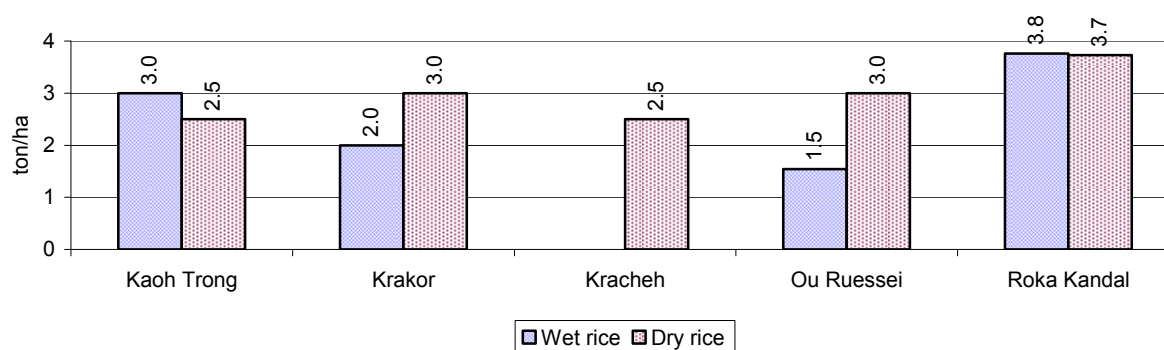
Descriptions	Number of places by year		
	2006	2007	2008
Small-scale services (hairstresser, phone service, massage, Karaoke, etc)	91	106	81
Small-scale food shop businesses (Food, groceries, drink shop, etc)	121	144	144
Small-scale rice mills	61	85	83
Medium or large-scale rice mills	0	0	0
Small-scale markets	4	5	3
Large-scale market	1	1	1
Alcohol refinery places	38	41	37
Pharmacies and small drug stores	12	14	7
Hotels	7	7	7
Guest houses	17	17	18
Restaurants	17	17	16
Gasoline stations	9	10	11

2.5 Agriculture

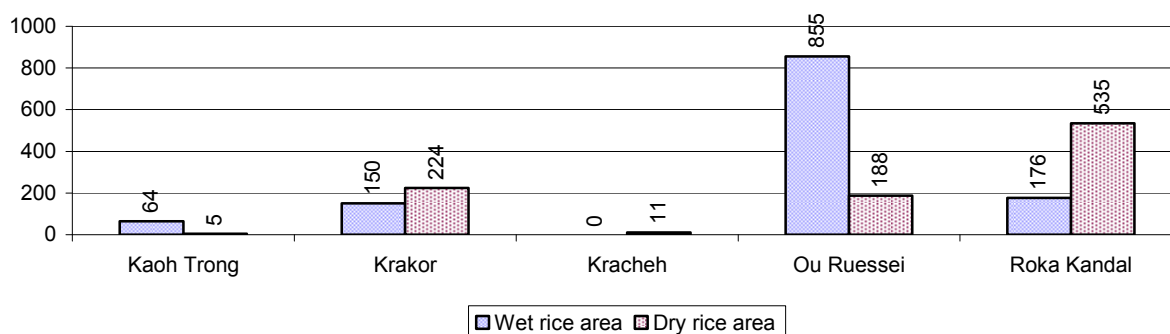
2.5.1 Rice cultivation in the District over 3 years

Description	2006	2007	2008
Total dry rice land area	1,001 ha	1,001 ha	1,017 ha
Actual dry rice cultivation area	991 ha	947 ha	963 ha
% actual cultivation to total land	99%	95%	95%
Total dry rice production	2,234 tonne(s)	2,557 tonne(s)	2,837 tonne(s)
Average dry rice yield	2.3 tonne(s)/ha	2.7 tonne(s)/ha	2.9 tonne(s)/ha
Total wet rice land area	1,233 ha	1,233 ha	1,245 ha
Actual wet rice cultivation area	1,233 ha	1,233 ha	1,245 ha
% actual cultivation to total land	100 %	100%	100%
Total wet rice production	2,342.70 tonne(s)	2,620.13 tonne(s)	3,205.88 tonne(s)
Average wet rice yield	1.9 tonne(s)/ha	2.1 tonne(s)/ha	2.6 tonne(s)/ha
Total intensive rice land area	0 ha	0 ha	0 ha
Actual intensive rice cultivation area	- ha	- ha	- ha
Average intensive rice yield	- tonne(s)/ha	- tonne(s)/ha	- tonne(s)/ha
Actual upland rice cultivation area	0 ha	0 ha	0 ha
Total upland rice production	- tonne(s)	- tonne(s)	- tonne(s)
Average upland rice yield	- tonne(s)/ha	- tonne(s)/ha	- tonne(s)/ha

2.5.2 Estimated wet and dry Season Rice Yield in tonne(s)/Ha, by Commune, in 2008



2.5.3 Cultivated wet and dry Season Rice areas in Ha, by Commune, in 2008



2.5.4 Estimated intensive Rice Yields in tonnes/Ha, by Commune, for 2008

There were no estimated intensive rice yields in this District in 2008

2.5.5 Estimated upland Rice Yield in tonnes/Ha, by Commune, for 2008

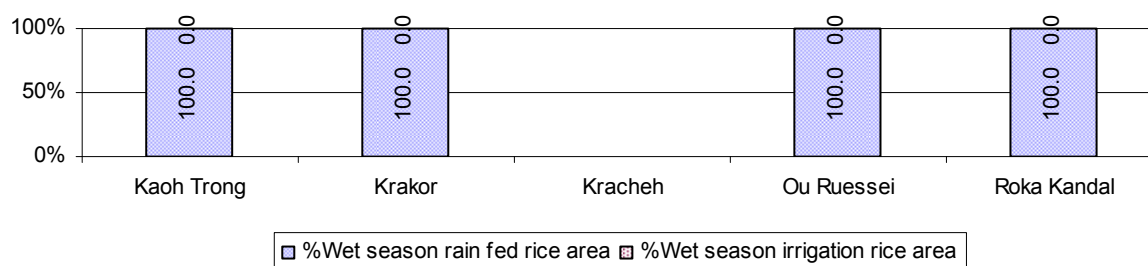
There were no estimated upland rice yields in this District in 2008

2.5.6 Wet season Rice irrigation across 3 years

Description		2006	2007	2008	
		%	%	%	Number
Total area of wet season rain fed rice land		99%	100%	100 %	1,245 ha
Percentage of wet season rice land that is irrigated; and for 2008 area in Ha		1 %	0 %	0 %	0 ha
Where	Area irrigated from canal/dam	0 %	- %	- %	0 ha
	Area irrigated from river, stream, lake, natural pond	55 %	- %	- %	0 ha
	Area irrigated from drilled well	0 %	- %	- %	0 ha
	Area irrigated from dug pond	45 %	- %	- %	0 ha

2.5.7 Water sources for wet Season Rice Cultivation, by Commune, in 2008

This chart shows the percentage of wet season rice cultivation receiving water from rain (natural) and from irrigation.



2.5.8 Access to Irrigation

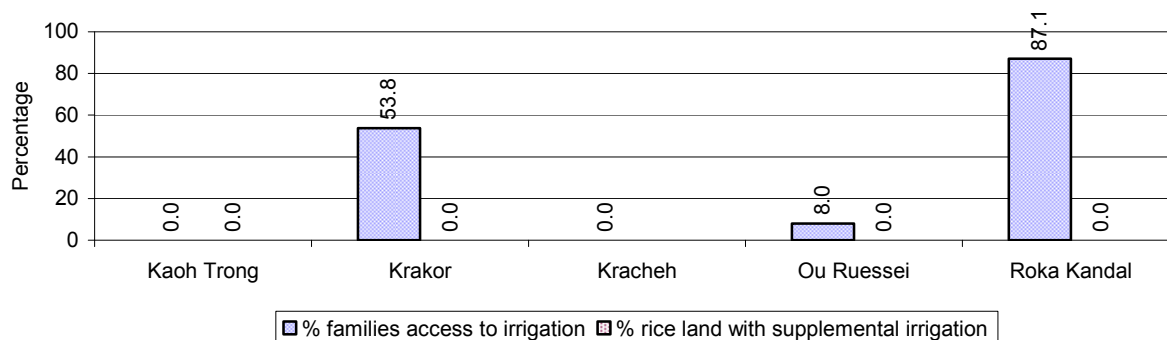
Description	2006	2007	2008	
	%	%	%	Number
Families who have access to irrigation water	36%	24%	30%	614 families
Families who have irrigation wells	2%	2%	2%	32 families

Note: Calculated against the total number of families are rice farmers

2.5.9 Number of Irrigation Wells over 3 years

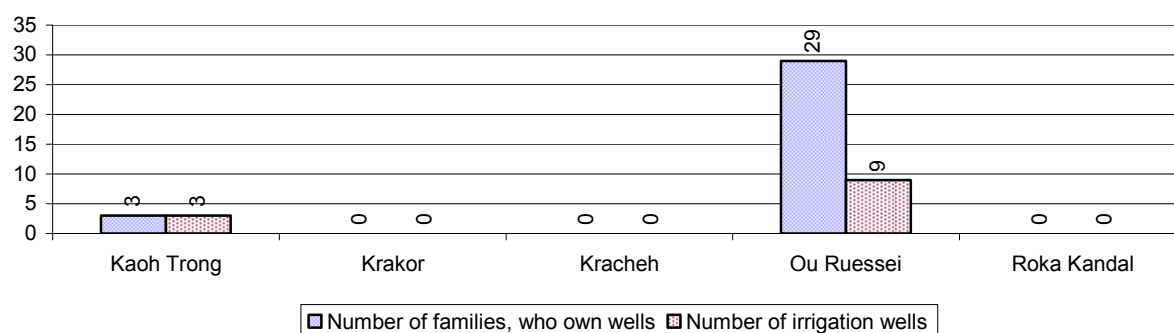
Description	2006	2007	2008
Number of irrigation wells	9 wells	17 wells	12 wells

2.5.10 Percentage of Families with access to (supplemental) Irrigation for wet Season Rice cultivation, by Commune, in 2008



Note: % of families, with access to irrigation is calculated against the total number of families, whose main occupation is rice farming. Irrigated wet rice land area is calculated against the total actual wet rice land cultivated areas

2.5.11 Irrigation Wells, by Commune, in 2008

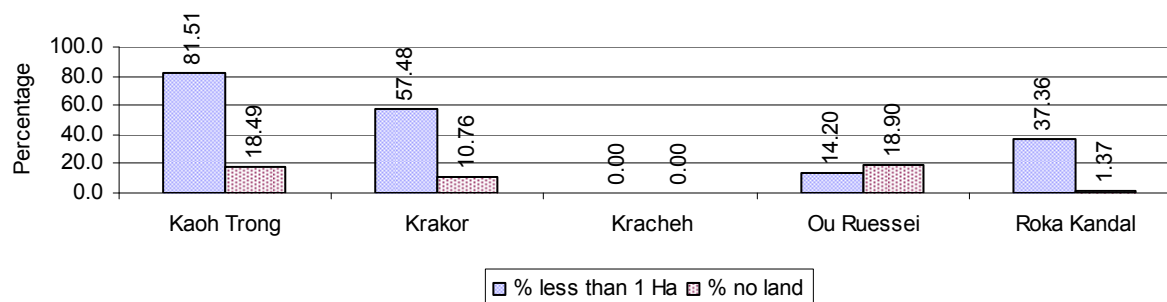


2.5.12 Farmers owning less than one hectare of Rice Land

Description	2006 %	2007 %	2008	
			%	Number
Families who have less than one hectare of rice land	29%	31%	31%	615 families
Families who do not own any rice land	15%	13%	14%	285 families

Note: Calculated on basis of total number of families who are rice farming

2.5.13 Percentage of Farmers with less than one Hectare or no Rice Land, by Commune, in 2008

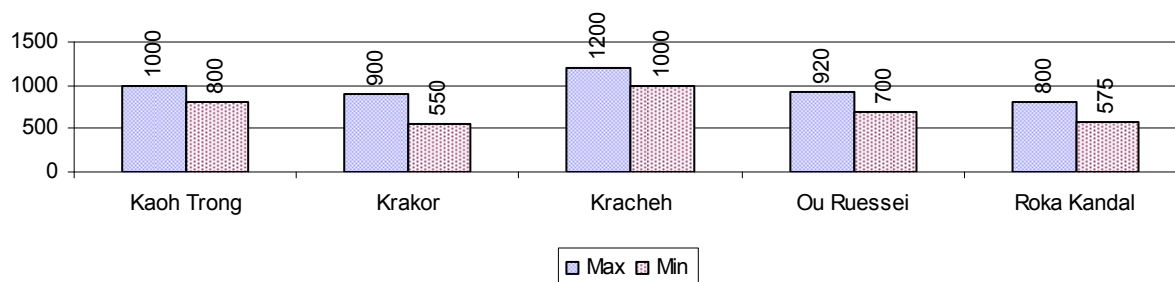


Note: Calculated on basis of total number of families who are rice farming

2.5.14 Average farm-gate Prices of Rice, over 3 years

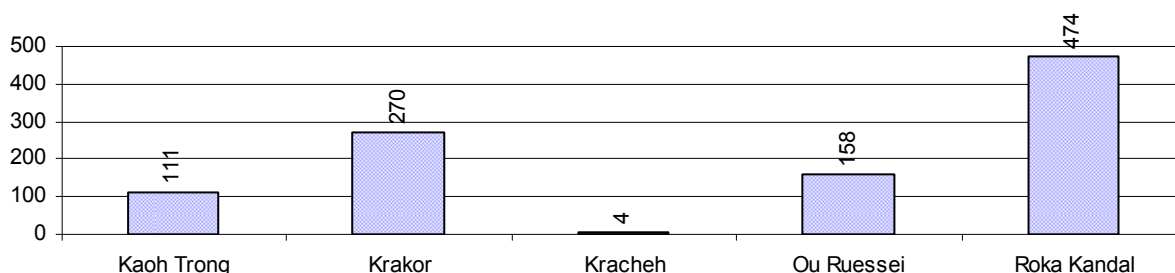
Description	2006	2007	2008
Maximum average farm gate price	689 Riels/Kg	833 Riels/Kg	964 Riels/Kg
Minimum average farm gate price	501 Riels/Kg	654 Riels/Kg	725 Riels/Kg
Average farm gate price	595 Riels/Kg	744 Riels/Kg	845 Riels/Kg
Average rice production per person	161 Kg/person	183 Kg/person	207 Kg/person

2.5.15 Minimum and maximum farm-gate Prices of Rice in Riel/kg, by Commune, in 2008



2.5.16 Production of Paddy in Kgs/Person, by Commune, in 2008

This table shows how much paddy (harvested rice) is produced in a year in a commune, in kgs per person.

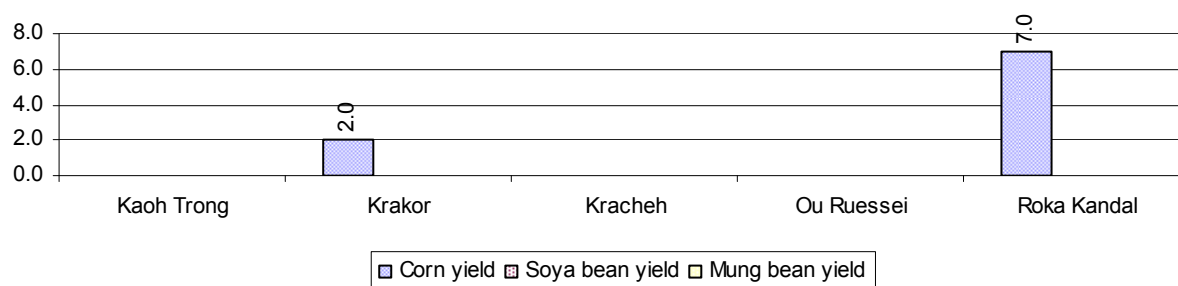


2.5.17 Production of other Crops, over 3 years

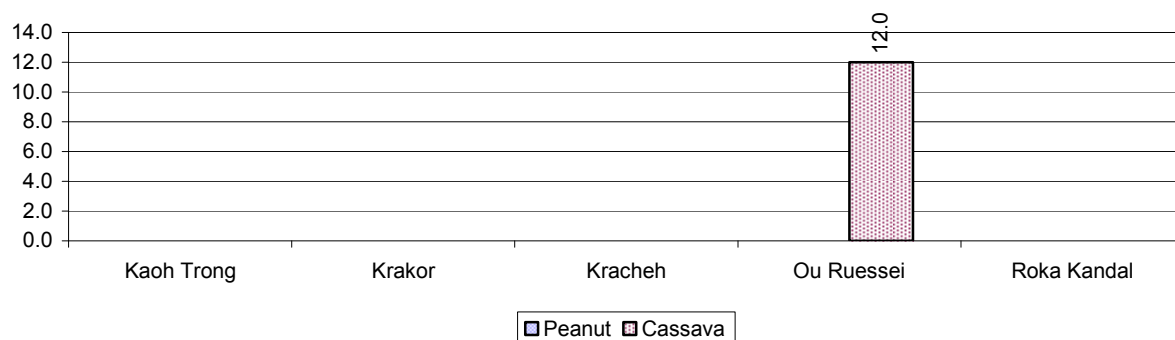
Crops	2006	2007	2008
Corn cultivation area	137 ha	101 ha	215 ha
Estimated corn yield	1.2 tonne(s)/ha	3.3 tonne(s)/ha	4.5 tonne(s)/ha
Estimated corn production	160 tonne(s)	328 tonne(s)	968 tonne(s)
Soya bean cultivation area	0 ha	0 ha	0 ha
Estimated Soya bean yield	- tonne(s)/ha	- tonne(s)/ha	- tonne(s)/ha
Estimated Soya bean production	- tonne(s)	- tonne(s)	- tonne(s)
Mungbean cultivation area	0 ha	0 ha	0 ha
Estimated Mungbean yield	- tonne(s)/ha	- tonne(s)/ha	- tonne(s)/ha
Estimated Mungbean production	- tonne(s)	- tonne(s)	- tonne(s)
Peanut cultivation area	0 ha	0 ha	0 ha
Estimated Peanut yield	- tonne(s)/ha	- tonne(s)/ha	- tonne(s)/ha
Estimated Peanut production	- tonne(s)	- tonne(s)	- tonne(s)
Cassava cultivation area	2 ha	3 ha	3 ha
Estimated Cassava yield	5.0 tonne(s)/ha	12.0 tonne(s)/ha	12.0 tonne(s)/ha
Estimated Cassava production	10 tonne(s)	36 tonne(s)	36 tonne(s)

Crops	2006	2007	2008
Sweet potatoes cultivation area	0 ha	1 ha	1 ha
Estimated Sweet potatoes yield	- tonne(s)/ha	8.0 tonne(s)/ha	8.0 tonne(s)/ha
Estimated Sweet potatoes production	- tonne(s)	8 tonne(s)	8 tonne(s)
Sesame cultivation area	0 ha	15 ha	0 ha
Estimated Sesame yield	- tonne(s)/ha	0.1 tonne(s)/ha	- tonne(s)/ha
Estimated Sesame production	- tonne(s)	2 tonne(s)	- tonne(s)

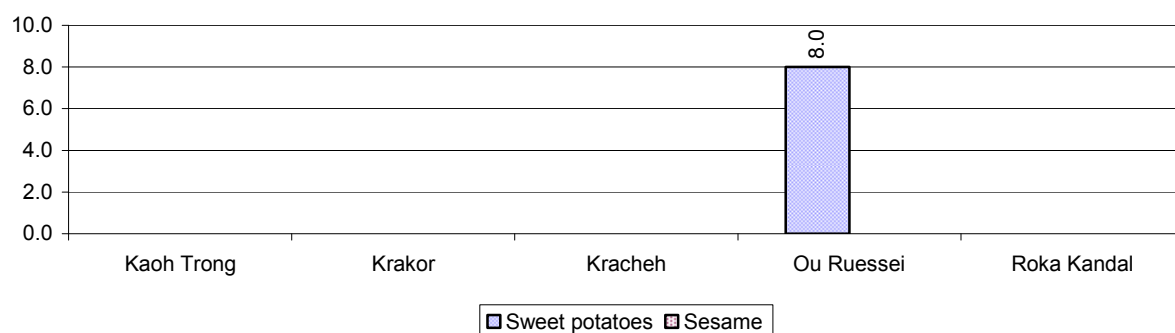
2.5.18 Yields of Corn, Soya beans and Mungbeans in tonne(s)/ha, by Commune, in 2008



2.5.19 Yields of Peanuts and Cassava in tonne(s)/ha by Commune, in 2008



2.5.20 Yields of Sweet Potatoes and Sesame in tonne(s)/ha, by Commune, in 2008



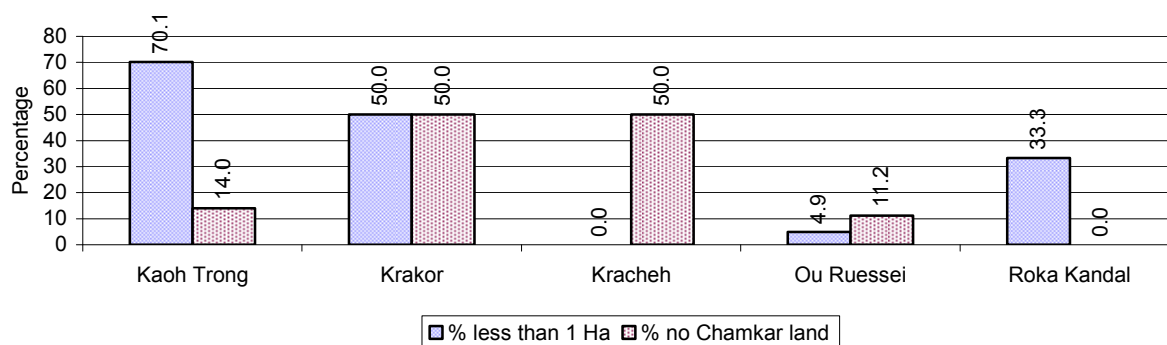
2.5.21 Percentage Farmers who own less than 1 Ha or no Chamkar land

Description	2006 %	2007 %	2008	
			%	Number
Families, who own less than 1ha of Chamkar land	21%	28%	32%	145 families
Families, with no Chamkar land	18%	13%	13%	57 families

Note 1: Calculated as a percentage of the total number of families whose main occupation is Chamkar (not rice) farming

Note 2: Chamkar land is no-rice land, i.e. other crops

2.5.22 Percentage Farmers owning less than 1 ha or no Chamkar land, by Commune, in 2008



Note: Percentage is calculated among families, who Chamkar farm as a main occupation, not the total population of the commune.

2.5.23 Percentage of Families raising Cattle/Buffalo, over 3 years

Description	2006 %	2007 %	2008	
			%	Number
Families raising cattle/buffalo	30%	30%	30%	1,756 families
Families raising cattle/buffalo as labor forces	22%	23%	22%	1,290 families

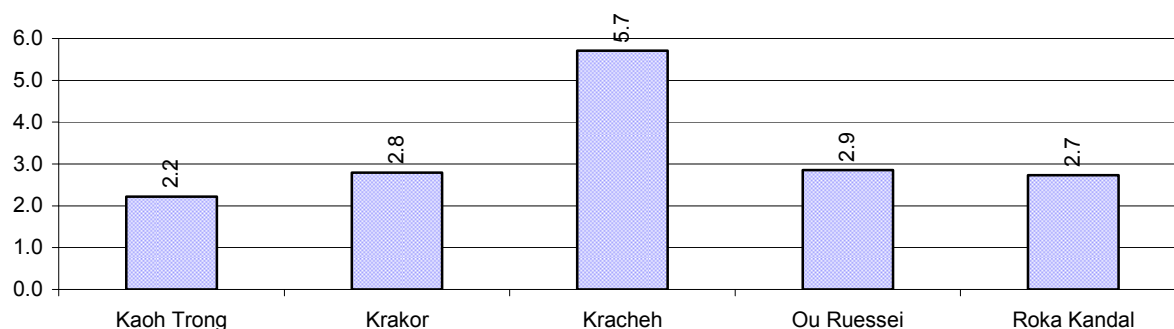
Note: Calculated against the total number of families.

2.5.24 Number of Cattle/buffalo being raised, over 3 years

Description	2006	2007	2008
Total number of cattle/buffalo	4,816 head(s)	4,528 head(s)	4,856 head(s)
Average cattle/buffalo per families	2.8 head(s)/families	2.6 head(s)/families	3 head(s)/families

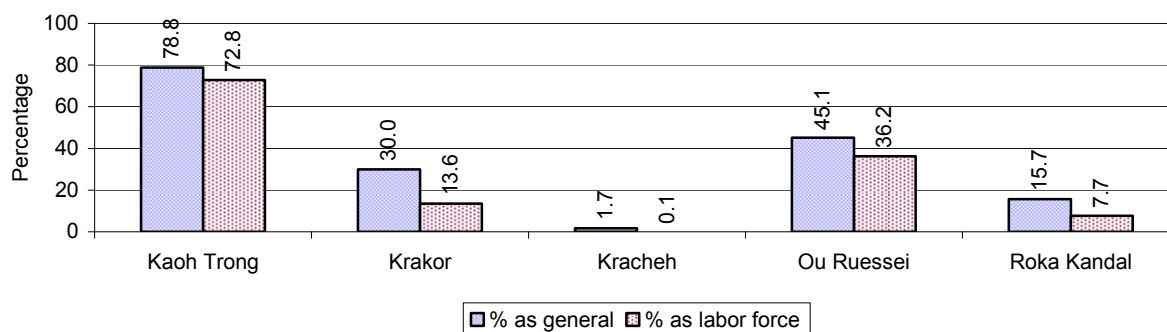
Note: Calculated by dividing total number of cattle/buffalo by total number of cattle/buffalo raising families

2.5.25 Average number of Cattle/Buffalo per Family, by Commune, in 2008



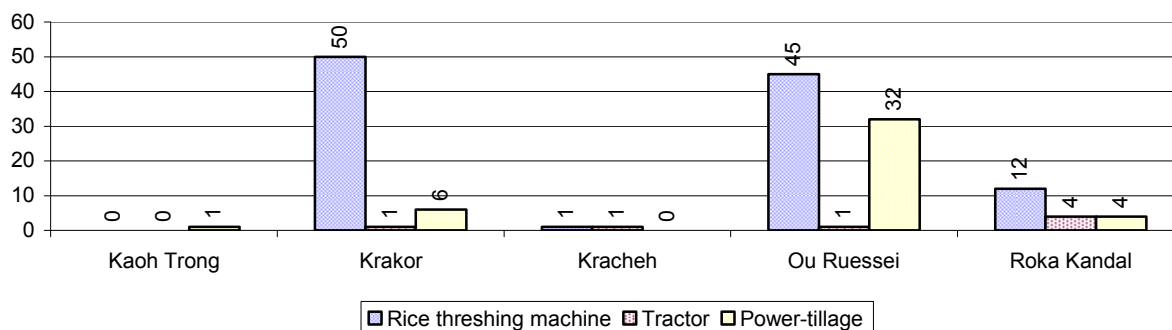
Note: Calculated by dividing total number of cattle/buffalo by total number of cattle/buffalo raising families

2.5.26 Percentage Families raising Cattle/Buffalo, for general and labor purposes in 2008, by Commune



Note: Calculated using the total number of families raising cattle/buffalo against the total number of families.

2.5.27 Type and number of agricultural Machines, by Commune, in 2008

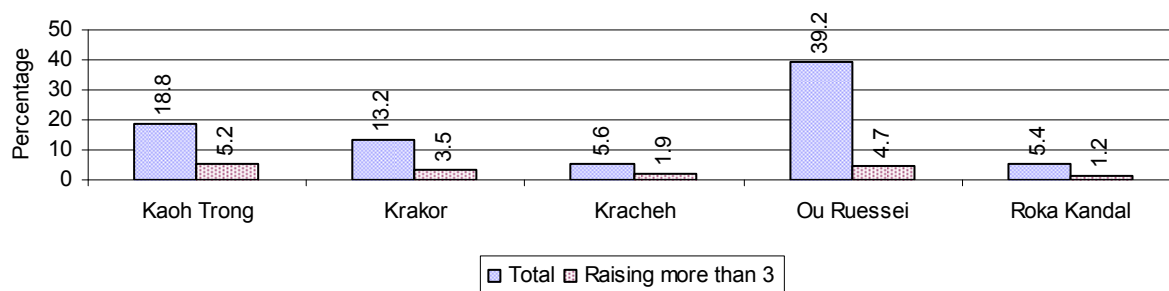


2.5.28 Livestock-producing Households over 3 years

Description	2006 %	2007 %	2008	
			%	Number
Total number of families raising pigs	22%	21%	20%	1,201 families
number of families raising more than 3 pigs	5%	4%	3%	194 families
Total number of families raising chickens	51%	50%	51%	3,051 families
number of families raising more than 3 chickens	42%	43%	41%	2,446 families
Total number of families raising ducks	6%	6%	7%	387 families
number of families raising more than 5 ducks	3%	3%	3%	166 families
Total number of families raising goats or sheep	0%	0%	0%	2 families
Total number of families raising horses	1%	1%	1%	56 families

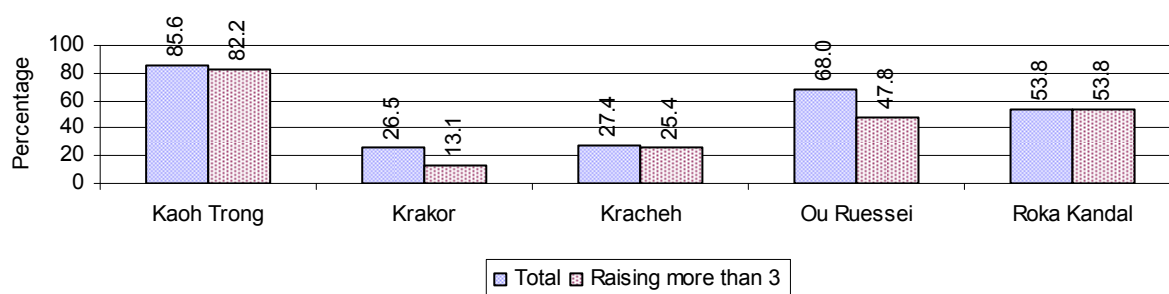
Note: Calculated against the total number of families

2.5.29 Percentage Families raising Pigs, by Commune, in 2008



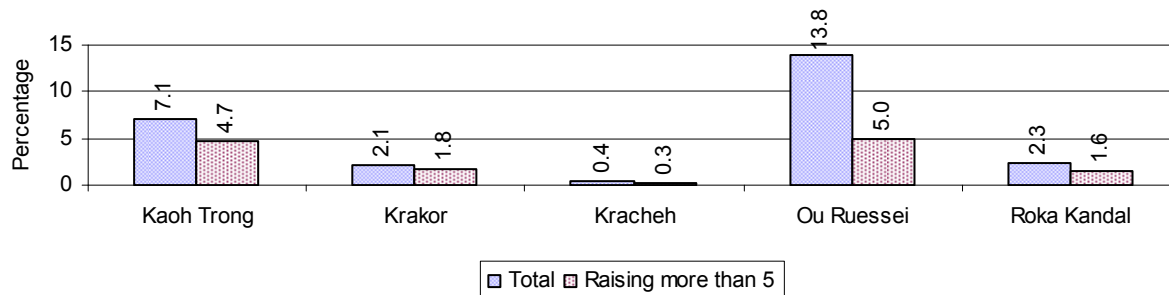
Note: Calculated against the total number of families in the commune

2.5.30 Percentage Families raising Chickens, by Commune, in 2008



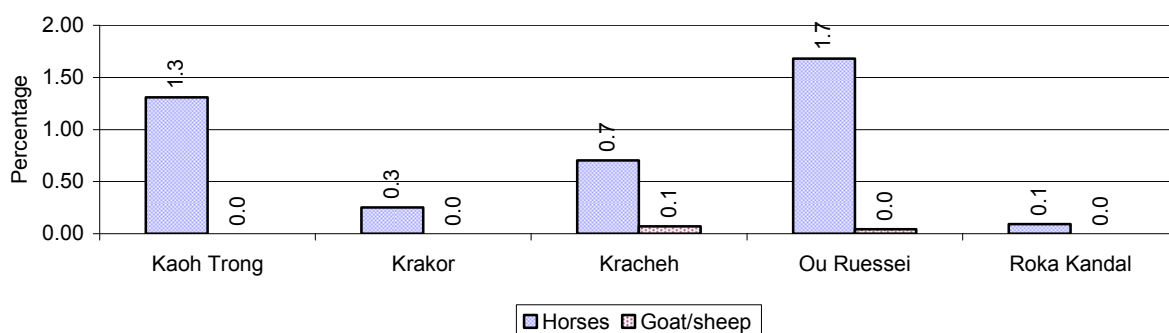
Note: Calculated against the total number of families in the commune

2.5.31 Percentage Families raising Ducks, by Commune, in 2008



Note: Calculated against the total number of families in the commune

2.5.32 Percentage Families raising Horses, Goats or Sheep, by Commune, in 2008

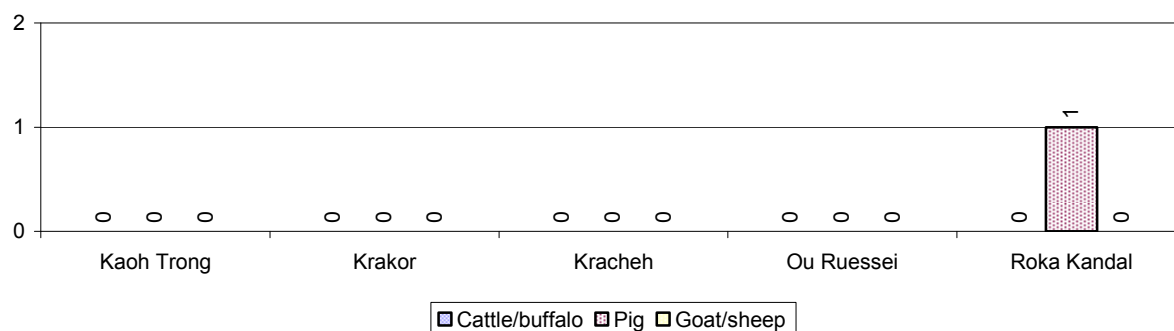


Note: Calculated against the total number of families in the commune

2.5.33 Livestock Farms over 3 years

Description	2006	2007	2008
Number of cattle/buffalo farms	0 farm(s)	0 farm(s)	0 farm(s)
Number of pig farms	0 farm(s)	1 farm(s)	1 farm(s)
Number of goat/sheep farms	0 farm(s)	0 farm(s)	0 farm(s)
Number of chicken farms	0 farm(s)	0 farm(s)	0 farm(s)
Number of duck farms	0 farm(s)	0 farm(s)	0 farm(s)

2.5.34 Number Livestock Farms, by Commune in 2008



Note: Number of farms are recorded by the village chief, not by counting number of livestock in each farm

2.5.35 Number Chicken and Duck Farms, by Commune, for 2008

There were no farms of this type in this District in 2008

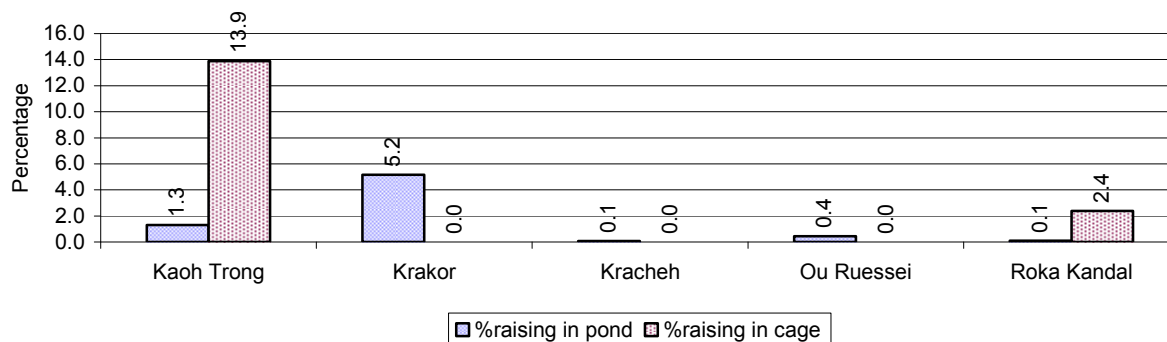
Note: Number of farm places recorded by village chief, not by counting number of livestock in each farm

2.5.36 Families raising Fish over 3 years

Description	2006	2007	2008
Total number of families raising fish	122 families	113 families	137 families
% families raising fish	2%	2%	2%
Number families raising fish in pond	38 families	37 families	58 families
% families raising fish in pond	1%	1 %	1%
Number fish pond	50 pond(s)	54 pond(s)	109 pond(s)
No. of ponds per family	1.3 pond/families	1.5 pond/families	1.9 pond/families
Number of families raising fish in cage	84 families	76 families	79 families
%families raising fish in cage	1 %	1 %	1%
Number of fish cage	91 cage(s)	83 cage(s)	84 cage(s)
No. of fish cage per family	1.1 cage /families	1.1 cage /families	1.1 cage /families

Note: % of families raising fish or fish in ponds or cages is calculated a percentage of the total number of families.

2.5.37 Percentage of Families raising Fish, by Commune, in 2008



Note: Calculated as a percentage of the total number of families in the commune.

2.5.38 Shrimp and Prawn Farming over 3 years

Description	2006	2007	2008
Number of families raising shrimps	0 families	0 families	0 families
% Families raising shrimps	0%	0%	0%
Number of shrimp ponds	0 pond	0 pond	0 pond
Total area raising shrimps	0 ha	0 ha	0 ha
Area per family	-ha/families	-ha/families	-ha/families
Number of families raising prawns	0 families	0 families	0 families
% families raising prawns	0%	0%	0%
Number prawn ponds	0 pond	0 pond	0 pond
Ponds per families	- pond/families	-pond/families	-pond/families
Number of prawn cages	0 cage	0 cage	0 cage
Cages per families	0 cage /families	0 cage /families	0 cage /families

Note: Percentage of families raising either prawns or shrimp is calculated against the number of families, who do aquaculture farming, NOT the total population.

2.5.39 Numbers of Families raising Shrimps and number of Shrimp Ponds, by Commune, in 2008

There were none of these in this District in 2008

2.5.40 Number of Families raising Prawn and Number of Prawn Ponds/Cages, by Commune, in 2008

There were none of these in this District in 2008

3 Social Aspects

3.1 Education

3.1.1 Kindergarten in the District over 3 years

Description	2006	2007	2008
Number of community kindergarten schools	0 school(s)	0 school(s)	0 school(s)
Number of community kindergarten class rooms	0 room(s)	0 room(s)	0 room(s)
Number of community kindergarten classes	0 class(es)	0 class(es)	0 class(es)
Number of community kindergarten teachers	0 person(s)	0 person(s)	0 person(s)
Number of women community kindergarten teachers	0 women	0 women	0 women
Number of state and private kindergarten schools	7 school(s)	7 school(s)	7 school(s)
Number of state and private kindergarten class rooms	15 room(s)	15 room(s)	17 room(s)
Number of state and private kindergarten classes	15 class(e)s	15 class(es)	17 class(es)
Number of state and private kindergarten teachers	26 person(s)	24 person(s)	21 person(s)
Number of women state and private kindergarten teachers	26 women	24 women	21 women

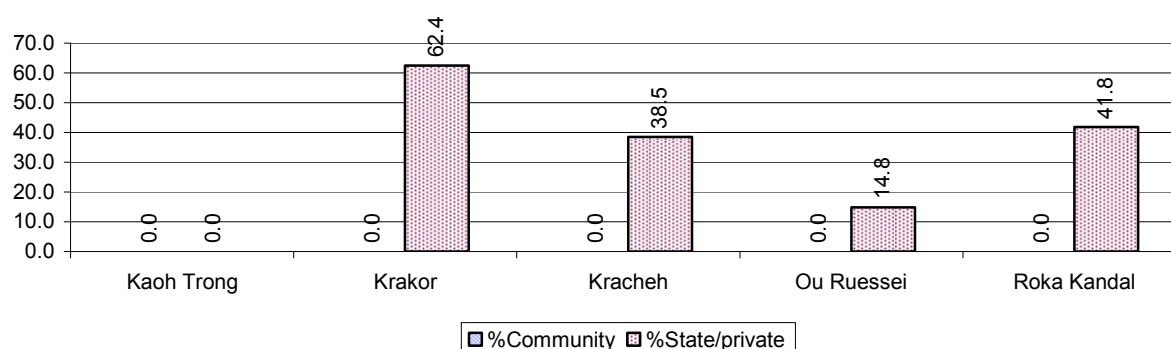
3.1.2 Percentage enrolment at Kindergarten level over 3 years

This table shows the percentage of the total 3-5 year old population attending kindergarten.

Description	2006 %	2007 %	2008	
			%	Number
Total percentage of children, 3-5 yrs, go to kindergarten	28%	23%	28%	522 person(s)
Percentage of children, 3-5 yrs, go community kindergarten	6%	0%	0%	0 person(s)
Percentage children, 3-5 yrs, go state/private kindergarten	23%	23%	28%	522 person(s)

Note: Calculated against the total for that age group

3.1.3 Percentage of Children 3-5 yrs attending Kindergarten, by Commune, in 2008



3.1.4 Basic Education over 3 years

Primary School

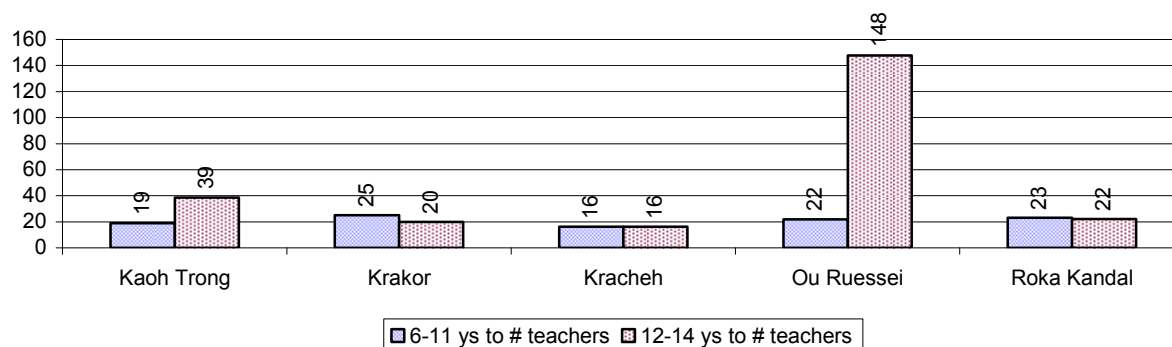
Description	2006	2007	2008
Number of primary schools	14 school(s)	13 school(s)	14 school(s)
Number of primary school rooms	121 room(s)	122 room(s)	132 room(s)
Number of primary classes	139 class(es)	139 class(es)	140 class(es)
Number of primary teachers	166 person(s)	163 person(s)	186 person(s)
Ratio of children 6-11 yrs to school	281	286	276
Ratio of children 6-11 yrs to school room	32	30	29
Ratio of children 6-11 yrs to class	28	27	28
Ratio of children 6-11 yrs to teacher	24	23	21

Note: According to education norm, children 6-11 yrs should attend primary school, while 12-14 yrs should be in lower secondary school, but in reality this varies.

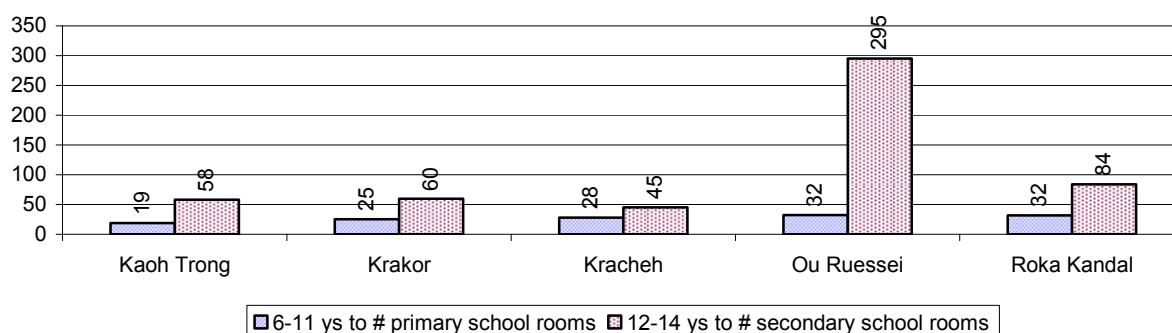
Lower Secondary School

Description	2006	2007	2008
Number of lower secondary schools	4 school(s)	5 school(s)	5 school(s)
Number of lower secondary school rooms	30 room(s)	25 room(s)	24 room(s)
Number of lower secondary classes	31 class(es)	41 class(es)	36 class(es)
Number of lower secondary teachers	72 person(s)	88 person(s)	68 person(s)
Ratio children 12-14 yrs to school	512	400	422
Ratio of children 12-14 yrs to school room	68	80	88
Ratio of children 12-14 yrs to class	66	49	59
Ratio of children 12-14 yrs to teacher	28	23	31

3.1.5 Ratio of 6-11 year old and 12-14 year old Children to number of Teachers, by Commune, in 2008



3.1.6 Ratio of 6-11 year old and 12-14 year old Children to number of School Rooms, by Commune, in 2008



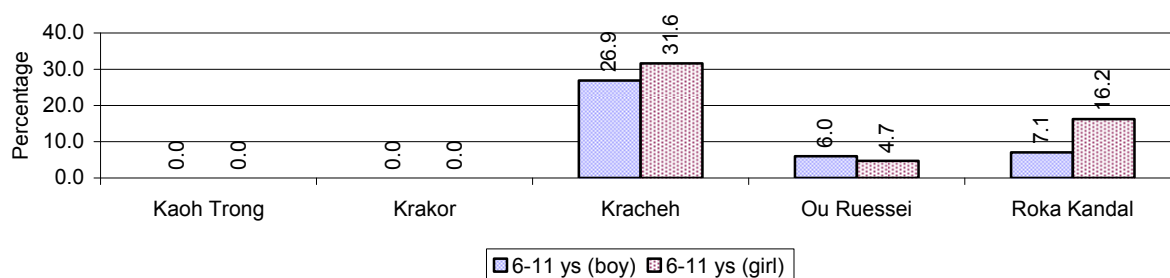
3.1.7 Enrolment status at Primary Level over 3 years

Description	2006 %	2007 %	2008	
			%	Number
Total children aged 6-11 years old	14%	13%	13%	3,859 person(s)
Total children aged 6-11 who are in school	93%	93%	90%	3,466 person(s)
Total children aged 6-11 who are not in school	7%	7%	10%	393 person(s)
Total girls aged 6-11 years old	13%	13%	13%	1,919 person(s)
Total girls aged 6-11 who are in school	93%	94%	89%	1,707 person(s)
Total girls aged 6-11 who are not in school	7%	6%	11%	212 person(s)
Total boys aged 6-11 years old	15%	14%	14%	1,940 person(s)
Total boys aged 6-11 who are in school	93%	93%	91%	1,759 person(s)
Total boys aged 6-11 who are not in school	7%	7%	9%	181 person(s)

Note 1: Percentage is calculated on the basis of the total number of children within 6-11 year age group for the first 3 rows and for the total girls and the total boys aged 6-11 yrs.

Note 2: Number of girls aged 6-11 who are in & not in school is calculated against the total number of girls aged 6-11 yrs. Number boys, 6-11 yrs who are in & not in school are calculated against the total number of boys aged 6-11 yrs.

3.1.8 Percentage of 6-11 year old Children not in School, by Commune, in 2008



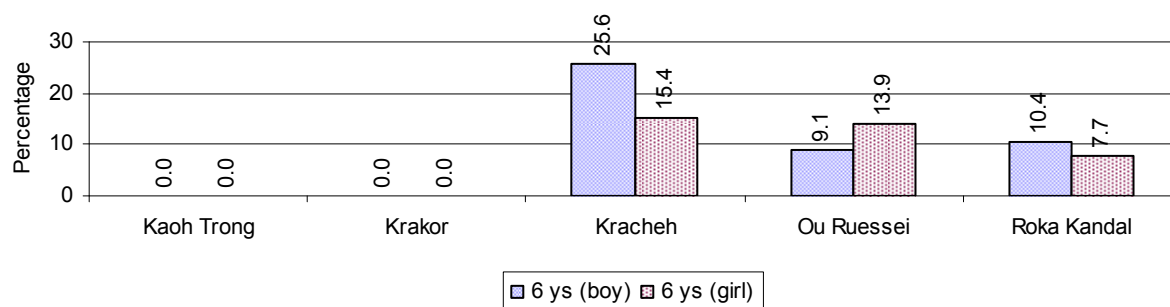
Note: calculated on the basis of the total number of children within 6-11 year age group in the commune.

3.1.9 Enrolment of 6 year old Children over 3 years

Description	2006 %	2007 %	2008	
			%	Number
Total % and number of children aged 6 years old	3%	4%	4%	1,035 person(s)
Total % of children aged 6 years old in school	91%	92%	87%	904 person(s)
Total % of children aged 6 years old not in school	9%	8%	13%	131 person(s)

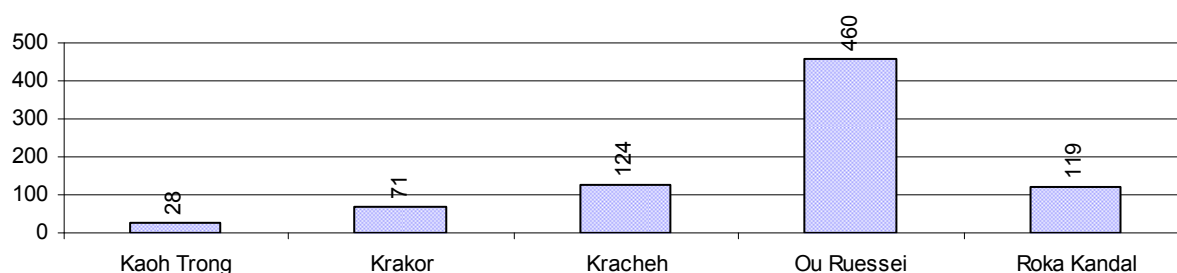
Note: First row calculated as a percentage of total population. Second and third row calculated as a percentage of the total number of 6 year olds.

3.1.10 Percentage of 6 year old Children not in School, by Commune, in 2008



Note: Calculated as a percentage of total 6 year old population

3.1.11 Number of 5 year old Children in each Commune in 2008

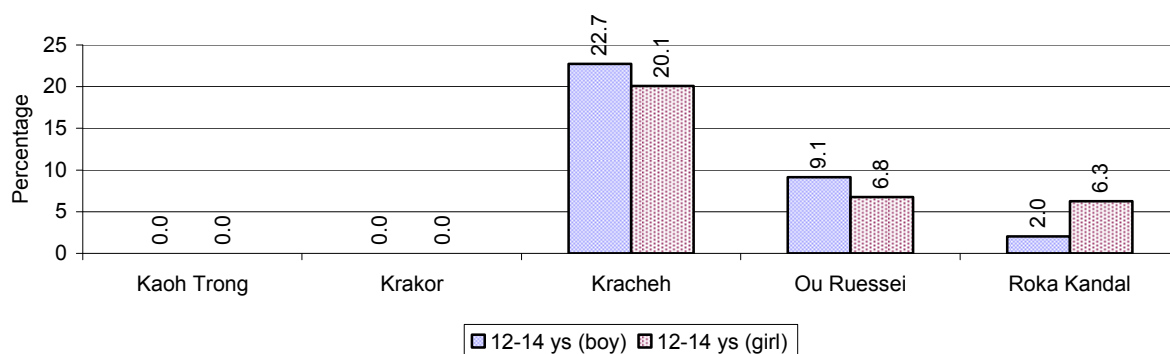


3.1.12 Enrolment at Lower Secondary Level over 3 years

Description	2006 %	2007 %	2008	
			%	Number
Total children aged 12-14 years old	7%	7%	7%	2,112 person(s)
Children aged 12-14 years old in school	92%	93%	91%	1,927 person(s)
Children aged 12-14 years old not in school	8%	7%	9%	185 person(s)
Total girls aged 12-14 years old	7%	7%	7%	1,085 person(s)
Girls aged 12-14 years old in school	94%	94%	92%	996 person(s)
Girls aged 12-14 years old not in school	6%	6%	8%	89 person(s)
Total boys aged 12-14 years old	7%	7%	7%	1,027 person(s)
Boys aged 12-14 years old in school	91%	91%	91%	931 person(s)
Boys aged 12-14 years old not in school	9%	9%	9%	96 person(s)

Note: Percentage is calculated on the basis of number of the total number of children within 12-14 yrs group, except for the first row of each section which is calculated on the basis of the total population.

3.1.13 Percentage of 12-14 year olds not in School, by Commune, in 2008



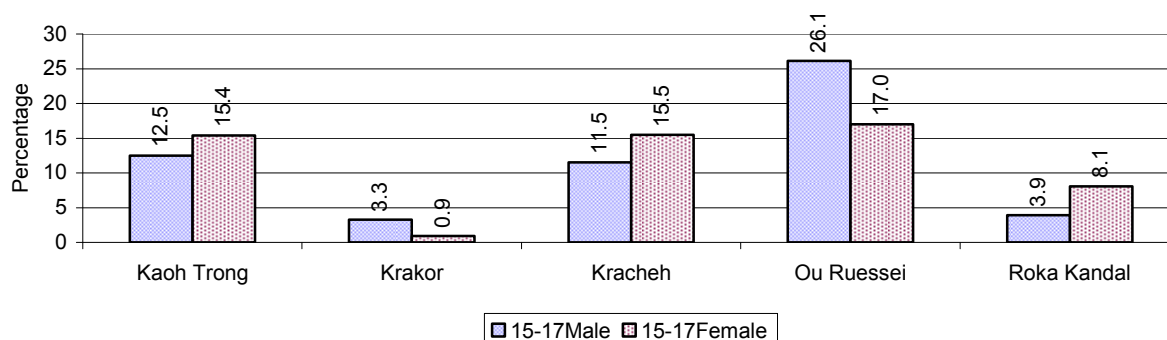
Note: Calculated as a percentage of the total 12-14 year old population in each commune

3.1.14 Upper Secondary Schools over 3 years

Description	2006	2007	2008
Number of upper secondary schools	2 school(s)	11 school(s)	4 school(s)
Number of upper secondary school rooms	44 room(s)	49 room(s)	66 room(s)
Number of upper secondary classes	38 class(es)	40 class(es)	59 class(es)
Number of upper secondary teachers	115 person(s)	117 person(s)	144 person(s)
Ratio of 15-17 yr olds to number of school	1,206	203	581
Ratio of 15-17 yr olds to number of school room	55	46	35
Ratio of 15-17 yr olds to number of classes	63	56	39
Ratio of 15-17 yr olds to number of teacher	21	19	16

3.1.15 Enrolment of 15-17 year old teenagers over 3 years

Description	2006	2007	2008
Number of teenage, 15-17 years old	2,412 person(s)	2,234 person(s)	2,322 person(s)
Number of teenage, 15-17 years old, who are not studying	301 person(s)	277 person(s)	337 person(s)
Percentage of teenage, 15-17 years old not studying	12%	12%	15%

3.1.16 Percentage of 15-17 year old Teenagers not at School, by Commune, in 2008**3.1.17 Literacy Classes as of 2008**

Literacy classes	Organized by:		Other Program(s)	Total
	PDoEYS	NGOs		
Number of On-going literacy classes	0 class(es)	0 class(es)	0 class(es)	0 class(e(s)
Number of literacy students in on-going classes	0 person(s)	0 person(s)	0 person(s)	0 person(s)
Completed literacy class(es)	0 classes	0 classes	0 classes	0 classes
Number of literacy students that have completed literacy classes	0 person(s)	0 person(s)	0 person(s)	0 person(s)
Number of students that passed	0 person(s)	0 person(s)	0 person(s)	0 person(s)

3.1.18 Number of on-going and completed Literacy Classes, by Commune, in 2008

There were no classes in this District in 2008

3.1.19 Students of on-going & completed Literacy Classes, by Commune, in 2008

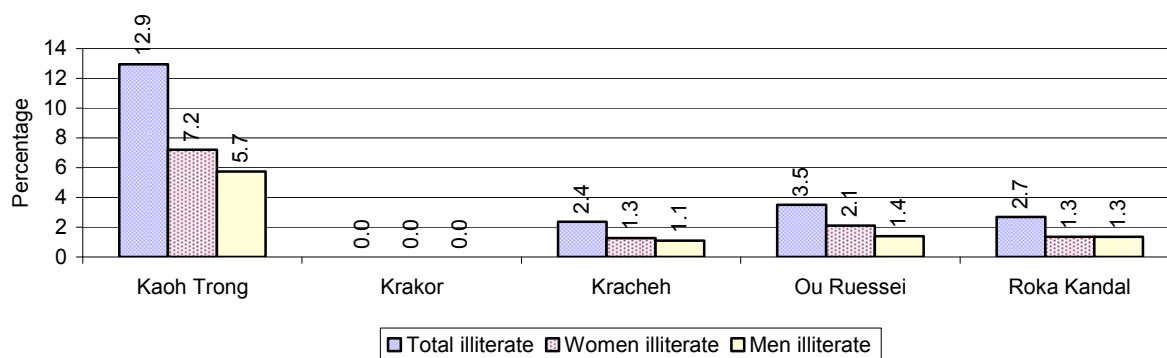
There were no students who had taken or were taking literacy classes in this District in 2008

3.1.20 Percentage of illiterate People between 15-60, over 3 years

Illiteracy Status	2006	2007	2008	
	%	%	%	Number
Illiterate people, 15-60 years old	4%	4%	3%	595 person(s)
Illiterate females, 15-60 years old	2%	2%	2%	335 person(s)
Illiterate people, 15-17 years old	3%	2%	2%	45 person(s)
Illiterate females, 15-17 years old	1%	1%	1%	21 person(s)
Illiterate people, 18-24 years old	4%	3%	2%	69 person(s)
Illiterate females, 18-24 years old	1%	1%	1%	39 person(s)
Illiterate people, 25-60 years old	5%	5%	4%	481 person(s)
Illiterate females, 25-60 years old	2%	3%	2%	275 person(s)

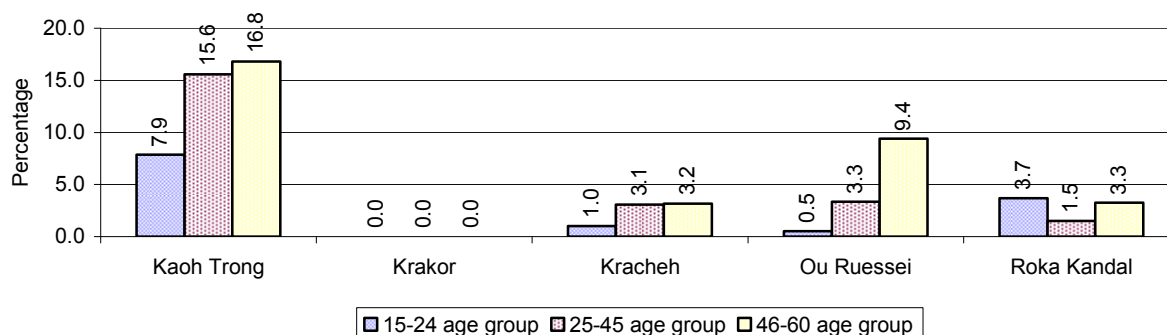
Note: Percentage is calculated on the basis of number of people in age each group.

3.1.21 Percentage illiterate People among 15-60 yrs old, by Commune, in 2008



Note: Percentages are calculated on the basis of number of people in that age group.

3.1.22 Percentage illiterate People for 15-24 yrs, 25-45 yrs and 46-60 yrs, by Commune, in 2008



Note: Percentage of illiterate people in each age group is calculated on the basis of number of people in that age group.

3.2 Health

3.2.1 Health Situation of Women and Children, over 3 years

Description	2006	2007	2008
Number families with a birth during the year	325 families	372 families	440 families
Number of women who had their baby delivered by a TBA	136 person(s)	92 person(s)	96 person(s)
Percentage of women who had their baby delivered by a TBA	42 %	25 %	22 %
Number of women who had their baby delivered by a midwife	189 person(s)	280 person(s)	344 person(s)
Percentage of women had their baby delivered by a midwife	58 %	75 %	78 %
Number of mothers who died within 1 month of giving birth	2 person(s)	0 person(s)	0 person(s)
Mothers who died within 1 month of giving birth per 100,000 families having a delivery	615	0	0
Number of infants born during the year	323 person(s)	372 person(s)	440 person(s)
Number of Infants who died within 1 month	7 person(s)	4 person(s)	0 person(s)
Infants mortality within 1 month per 1,000 births	22	11	0

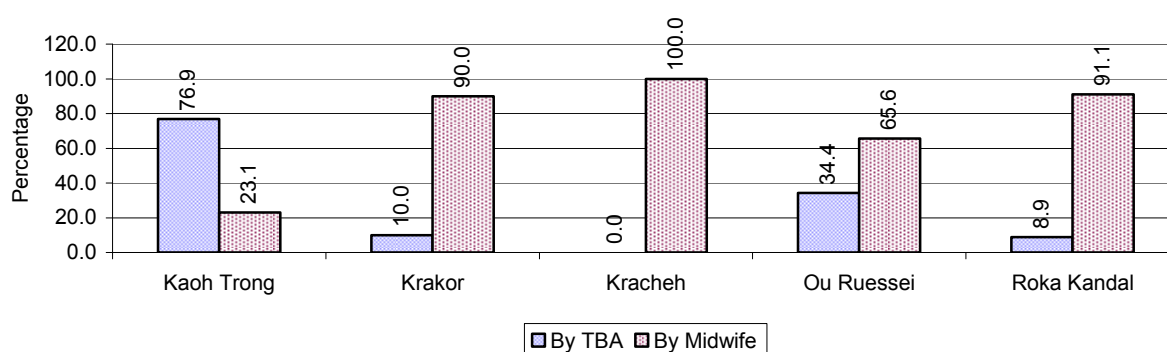
Description	2006	2007	2008
Number of children who died below the age of 5.	4 person(s)	25 person(s)	2 person(s)
Number of infants, aged 9-12 months, born during the year	160 person(s)	178 person(s)	217 person(s)
Nr. infants, aged 9-12 months, not receiving full immunization	0 person(s)	0 person(s)	7 person(s)
% of 9-12 months infants, not receiving full immunization	0 %	0 %	3 %

Note: TBA = Traditional Birth Attendant

3.2.2 Mothers dying within 0 days to 1 month of giving Birth and Infants dying within 1 month in 2008, by Commune

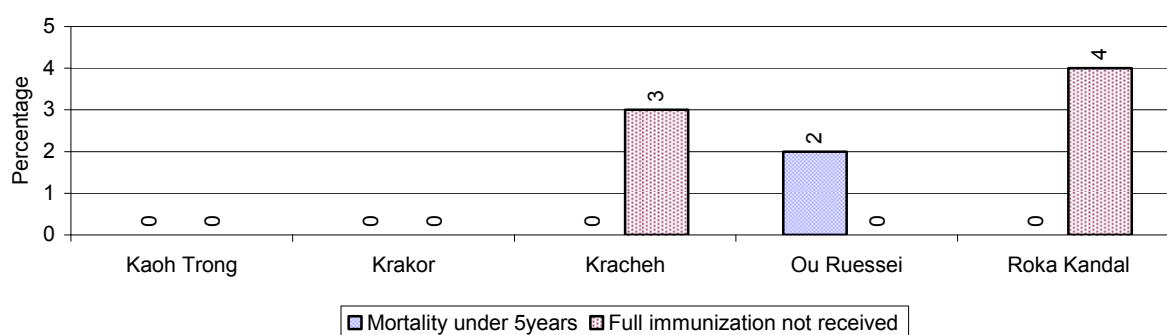
There were no mothers dying of giving birth and infants dying within 1 month

3.2.3 Percentage of Women delivering with a TBA or Midwife, by Commune



Note: Calculated as a percentage of total deliveries

3.2.4 Percentage of Children dying below 5 & of 9-12 months not receiving full Immunization, by Commune, in 2008



Note: Mortality rate calculated as a percentage of the total 5 year old population. Lack of immunization received calculated as a percentage of the total number 9-12 months olds there are

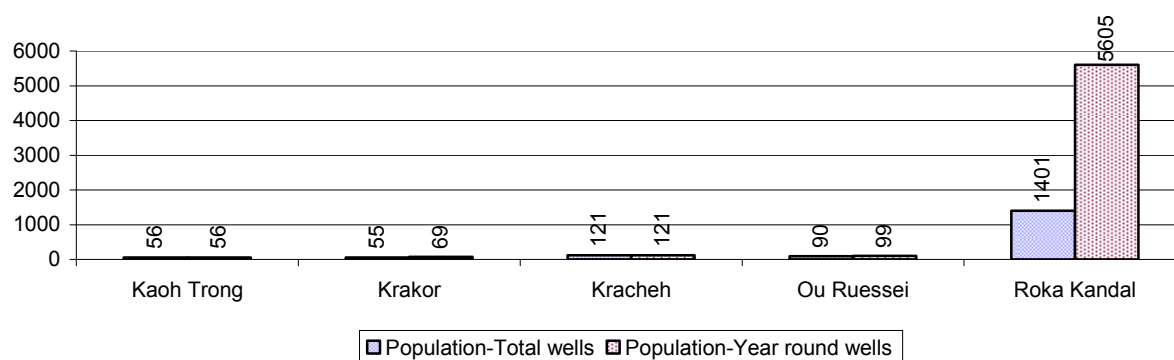
3.3 Water and Sanitation

3.3.1 Number of different types of Wells over 3 years

Type of wells	Number of wells by year		
	2006	2007	2008
Total number of pumped or mixed wells	156	157	179
Year-round usable pumped or mixed wells	147	148	169
Dry season unusable pump or mixed wells	9	9	10
Pump or mixed wells needing repair/rehabilitation	19	10	12

Type of wells	Number of wells by year		
	2006	2007	2008
<i>Total number of ring wells</i>	96	86	106
Year-round usable ring wells	79	68	88
Dry season unusable ring wells	17	18	18
Ring wells needing repair/rehabilitation	8	9	7
<i>Total number of unprotected dug wells</i>	14	12	10
Year-round usable unprotected dug wells	6	6	4
Dry season unusable unprotected dug wells	8	6	6

3.3.2 Ratio of People to Wells, by Commune, in 2008

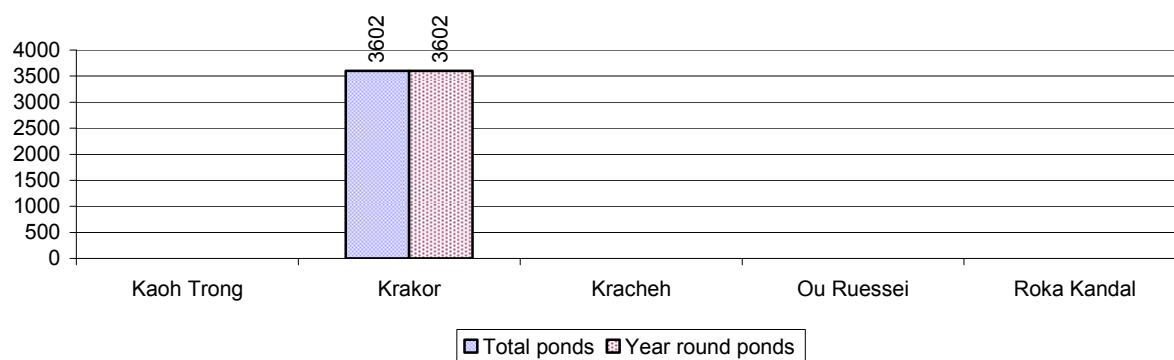


Note: Year-round wells excluding unprotected wells

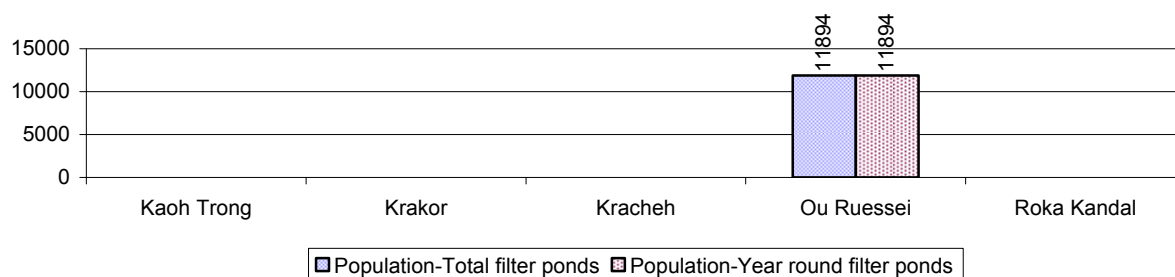
3.3.3 Potable Ponds over 3 years

Type of Pond	2006	2007	2008
<i>Total number of normal-type ponds</i>	0 pond	1 pond	1 pond
Year-round usable normal-type ponds	0 pond	1 pond	1 pond
Dry season unusable normal-type ponds	0 pond	0 pond	0 pond
Normal-type ponds needing repair/rehabilitation	4 pond	0 pond	0 pond
<i>Total number of filter ponds</i>	5 pond	1 pond	1 pond
Year-round usable filter ponds	1 pond	1 pond	1 pond
Filter ponds, dry season unusable	4 pond	0 pond	0 pond
Filter ponds needing repair/rehabilitate	4 pond	0 pond	0 pond

3.3.4 Ratio of People to normal Ponds, by Commune in 2008



3.3.5 Ratio of People to Filter Ponds, by Commune, in 2008

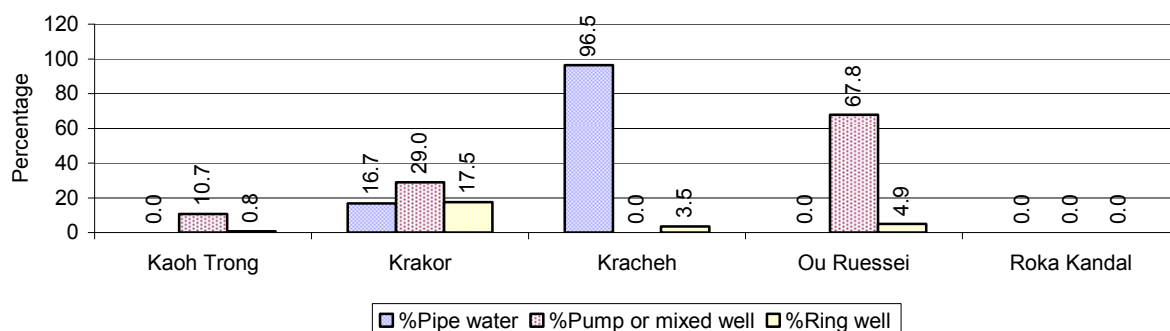


3.3.6 Source of potable Water for Households, over 3 years

Water sources	2006	2007	2008	
	%	%	%	Number
Families using water from purification system	39%	2 %	25 %	1,504 families
Families using water from pump, mixed wells	29%	24 %	30 %	1,805 families
Families using water from ring wells and open dug wells	9%	5 %	5 %	303 families
Families using water from pond	0%	0 %	0 %	1 families
Families using water from rain water storage	2%	0 %	0 %	6 families
Families using water from rivers, lakes, natural ponds and reservoirs	20%	69 %	39 %	2,330 families

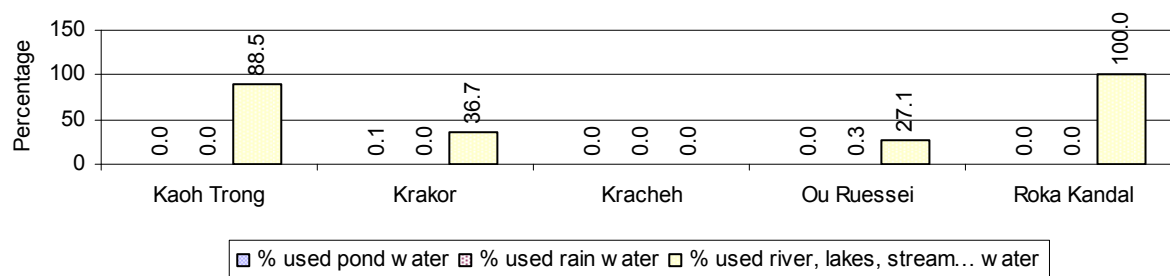
Note: Calculated as a percentage of the total number of families.

3.3.7 Percentage Families using different Water Sources, by Commune, in 2008



Note: Calculated as a percentage of the total number of families in each commune

3.3.8 Percentage Families using Water from Rain Water Storage, Ponds and natural Sources (rivers/lakes/natural ponds/reservoirs), by Commune, 2008



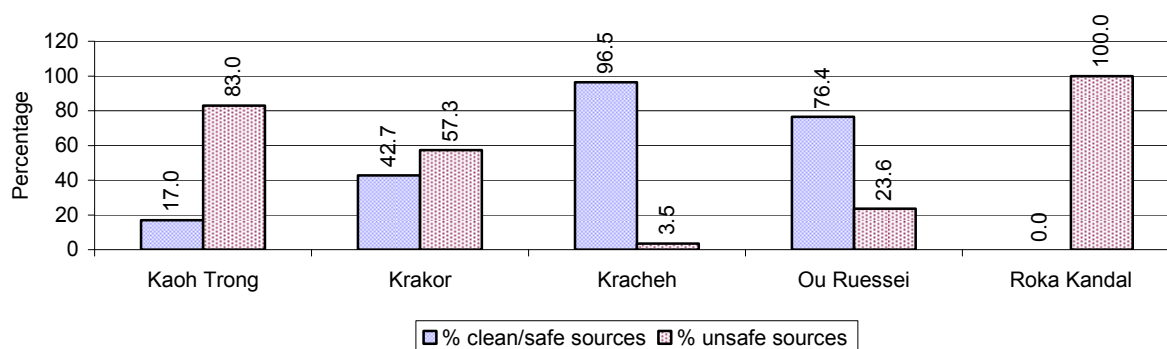
Note: Calculated as a percentage of the total number of families in each commune

3.3.9 Drinking Water Sources in the dry Season over 3 years

Percentage Families that get drinking water from:	2006 %	2007 %	2008	
			%	Number
from clean/safe sources	74 %	53 %	59 %	3,505 families
from unsafe sources	26 %	47 %	41 %	2,444 families

Note: Calculated as a percentage of the total number of families.

3.3.10 Percentage Families using safe and unsafe Water Sources in the dry Season, by Commune, in 2008



Note: Calculated as a percentage of the total number of families in each commune.

3.3.11 Drinking Water Purification by Households, over 3 years

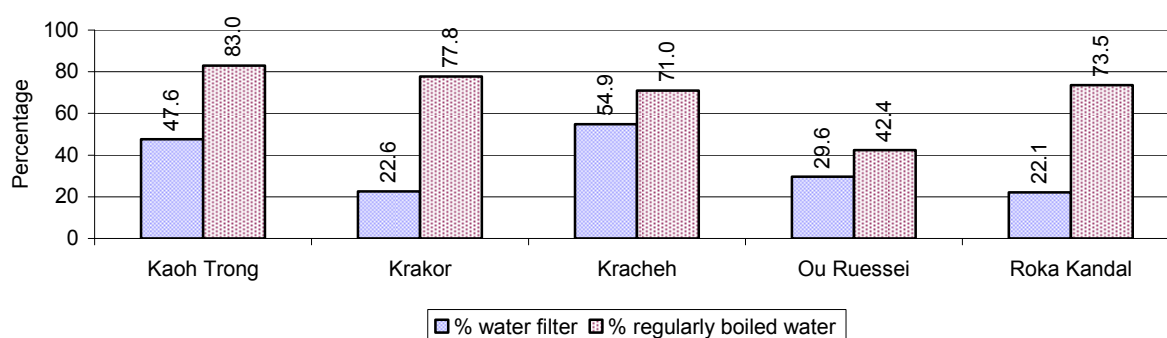
This table shows the different ways families make water safe for drinking.

Families, who:	2006 %	2007 %	2008	
			%	Number
Filter water for drinking	31%	28%	34 %	2,052 families
Boil water for drinking	51%	59%	62 %	3,704 families

Note: Calculated as a percentage of the total number of families

3.3.12 Percentage Families filtering Water or regularly boiling Water, by Commune, in 2008

This graph shows the different ways families make drinking water safe.



Note: Calculated on as a percentage of the total number of families in each commune.

3.3.13 Families' access to Water, over 3 years

Families access to water	2006 %	2007 %	2008	
			%	Number
Families with water at home or in less than 150m	74%	60%	58 %	3,459 families
Families with water 150m or more away from home	26%	37%	21 %	1,236 families

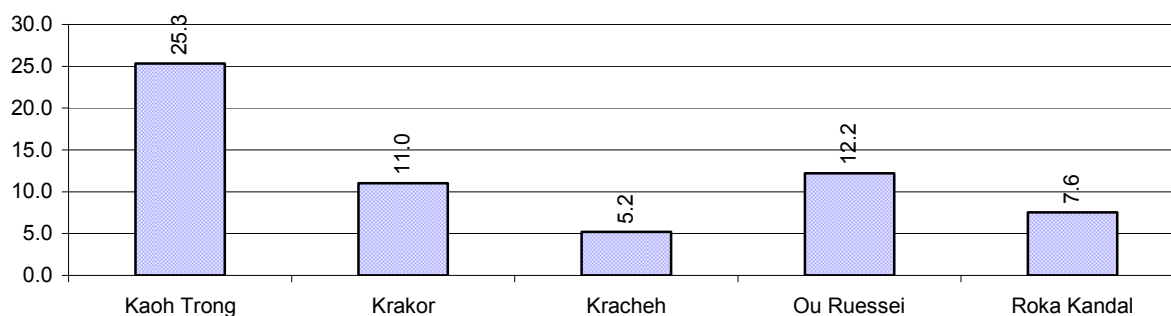
Note: Calculated as a percentage of the total number of families

3.3.14 Ratio of people to Latrines over 3 years

Description	2006 Ratio	2007 Ratio	2008	
			Ratio	Number
Ratio of people to latrines	9.4	9.0	8.8	3,302.0

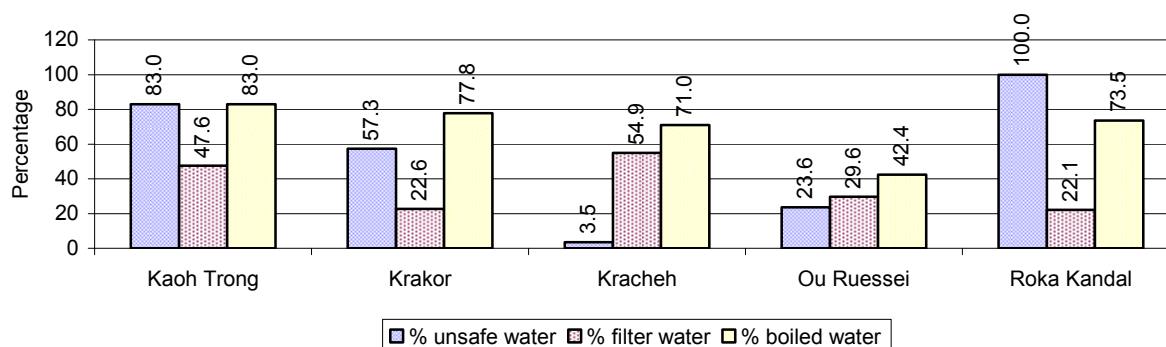
Note: Ratio calculated by dividing the number of houses with latrines by the total population

3.3.15 Ratio of People to Latrines, by Commune, in 2008



Note: Ratio calculated by dividing the number of houses with latrines by the total population in a Commune.

3.3.16 Percentage of Families drinking boiled, filtered or unsafe Water, by Commune, in 2008



Note: Calculated as a percentage of the total number of families in each commune.

3.4 Vulnerable groups

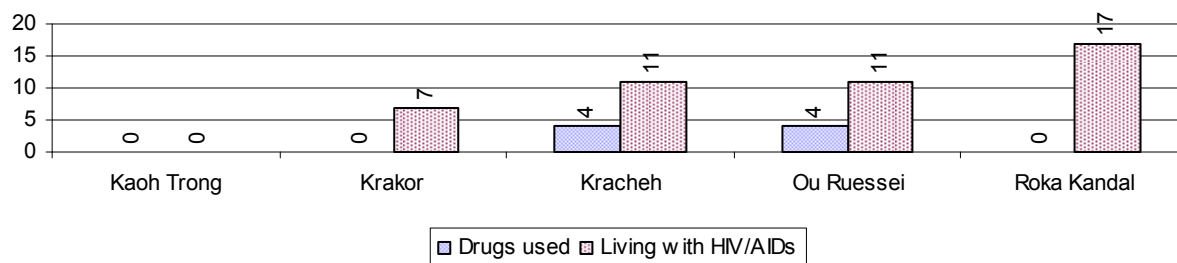
3.4.1 Vulnerable Groups in need of special Protection over 3 years

Vulnerable groups	2006	2007	2008
Victims of sexual abuse	1 person(s)	1 person(s)	0 person(s)
Victims of human trafficking	0 person(s)	0 person(s)	0 person(s)
Families with family member(s) using drugs	5 families	4 families	8 families
Families with family member(s) living with HIV/AIDS	40 families	34 families	46 families
Children under 18 yrs old whose parent died of AIDS	43 person(s)	33 person(s)	42 person(s)
Orphaned/abandoned children under 18 yrs old (all cases)	135 person(s)	127 person(s)	121 person(s)
Elderly persons without guardian	43 person(s)	63 person(s)	50 person(s)
Disabled people able to earn an income	39 person(s)	56 person(s)	51 person(s)
Disabled people unable to earn an income	32 person(s)	25 person(s)	26 person(s)
Disabled people under 18 yrs old	17 person(s)	11 person(s)	6 person(s)
Victims of natural disasters	147 families	29 families	51 families
Victims of land mines and unexploded weapons	2 person(s)	5 person(s)	1 person(s)

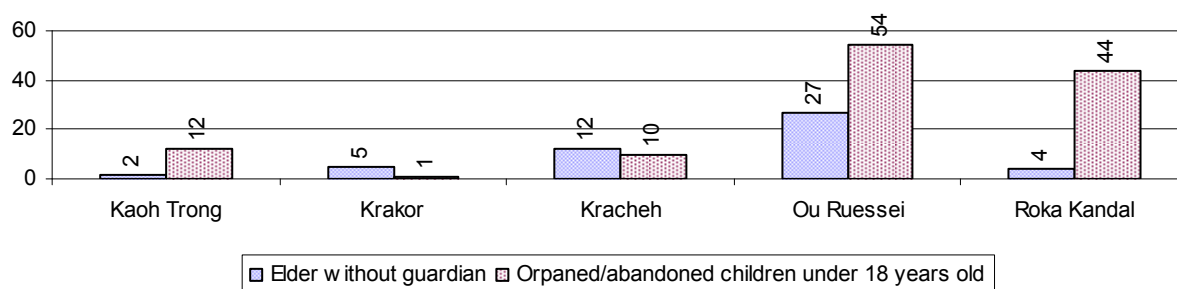
3.4.2 Registered Victims of sexual Abuse or Trafficking, by Commune, for 2008

There were no sexual abuse or trafficking in this District in 2008

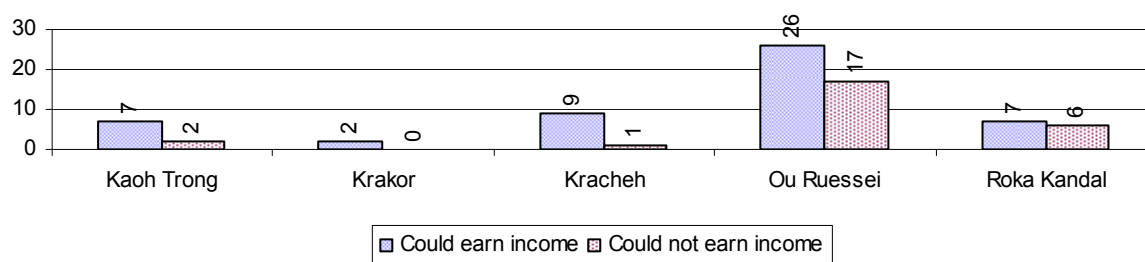
3.4.3 Registered Families with Member(s) using Drugs or living with HIV/AIDS, by Commune, for 2008



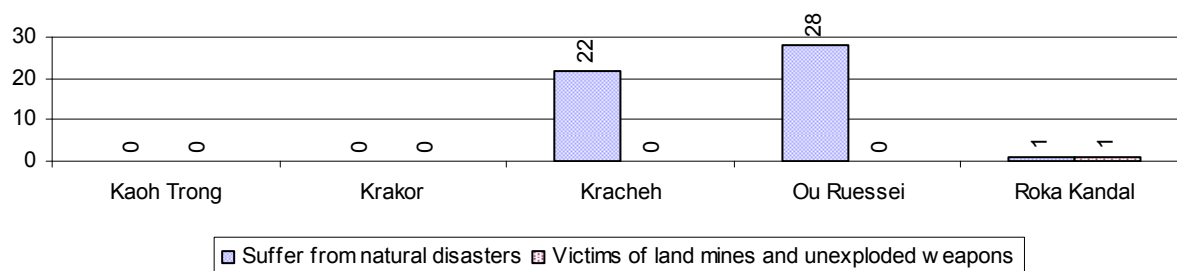
3.4.4 Elderly Persons without a Guardian and orphaned/abandoned Children under 18 years old, by Commune, for 2008



3.4.5 Number of disabled People who could or could not earn an Income, by Commune, for 2008



3.4.6 Number of Families who suffered from natural Disasters, and number of Victims of Land Mines and unexploded Weapons, by Commune, in 2008



3.5 Migration

3.5.1 Migration over 3 years

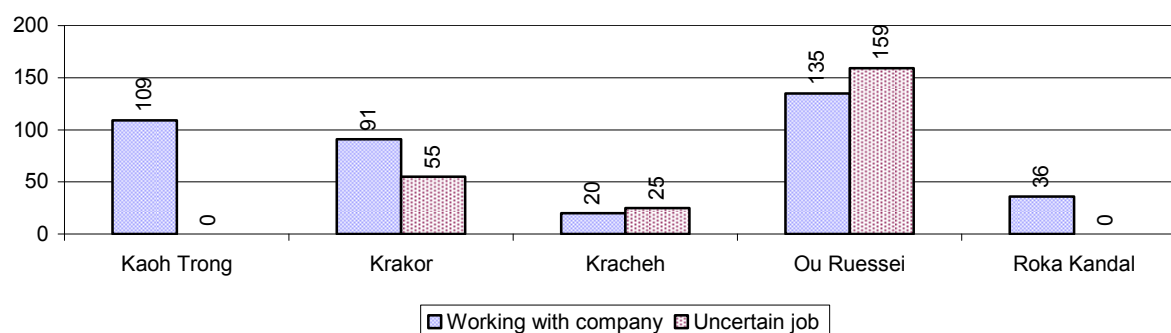
Description	2006	2007	2008
Number of families permanently in-migrated	30 families	28 families	35 families
Total number of people	135 person(s)	103 person(s)	152 person(s)
Total number of female	69 person(s)	54 person(s)	85 person(s)
Number of families permanently out-migrated	112 families	23 families	23 families
Total number of people	356 person(s)	92 person(s)	108 person(s)
Total number of female	176 person(s)	38 person(s)	51 person(s)
Number of families staying temporarily	123 families	30 families	37 families
Total number of people	492 person(s)	106 person(s)	166 person(s)
Total number of female	254 person(s)	55 person(s)	76 person(s)

3.5.2 Job Migration

Description	2006	2007	2008
Number of people migrated to work with company/factory	4%	3%	2% 391 persons
Number of people migrated to work, but have uncertain jobs	2%	2%	2% 239 persons

Note: Calculated as a percentage of the total population of 18-60 year olds

3.5.3 Number of People working outside their home Villages in a Company/Factory or with an uncertain Job in 2008

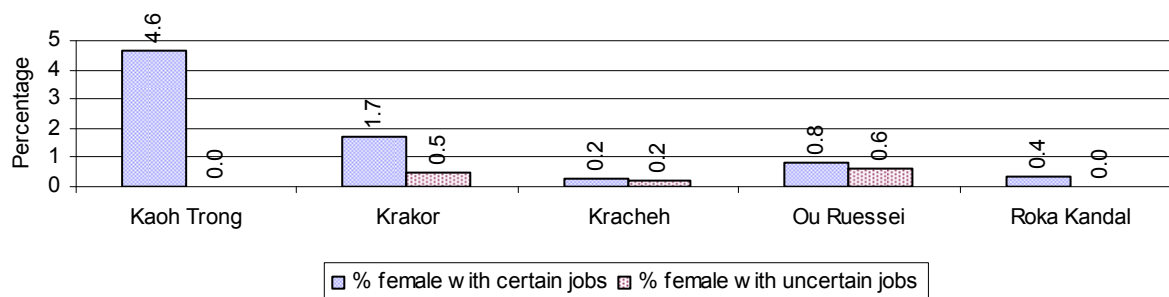


3.5.4 Female migration over 3 years

Description	2006 %	2007 %	2008	
			%	Number
Total number of migrants	2.7%	2.6%	2.2%	630 person(s)
Number of female migrants	1.5%	1.4%	1.3%	393 person(s)
Total number of migrants, who go to work with company/factory (with certain jobs)	1.9%	1.6%	1.3%	391 person(s)
Number of female migrants with certain jobs	1.1%	1.0%	1.0%	284 person(s)
Total number of migrants with uncertain jobs	0.8%	1.0%	0.8%	239 person(s)
Number of female migrants with uncertain jobs	0.4%	0.5%	0.4%	109 person(s)

Note: Calculated as a percentage of the total population

3.5.5 Percentage female Migrants with certain and uncertain Jobs, by Commune, in 2008



Note: Calculated as a percentage of the total population of the commune

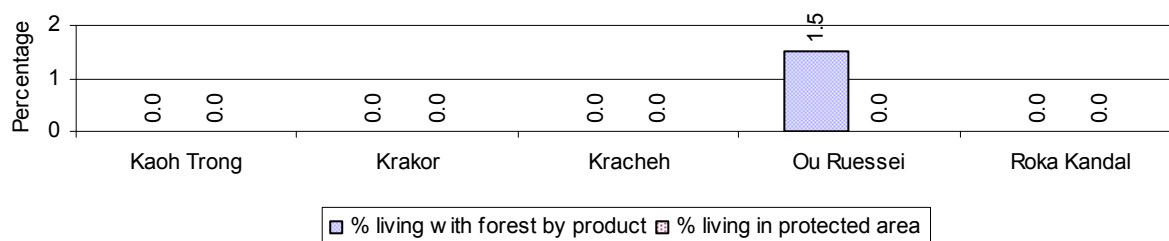
4 Natural Resources and Environment (NRE)

4.1 Families involved with NRE issues over 3 years

Description	2006 %	2007 %	2008	
			%	Number
Families living with forest by products	1 %	1 %	1 %	34 families
Families living in a protected area	2 %	0 %	0 %	0 families
Houses with access to garbage collection service	4 %	4 %	1 %	50 families
Families affected by environmental pollution	3 %	3 %	1 %	59 families
Families using chemical fertilizer	22 %	17 %	17 %	1,033 families
Families using chemical pesticide	17 %	13 %	13 %	795 families

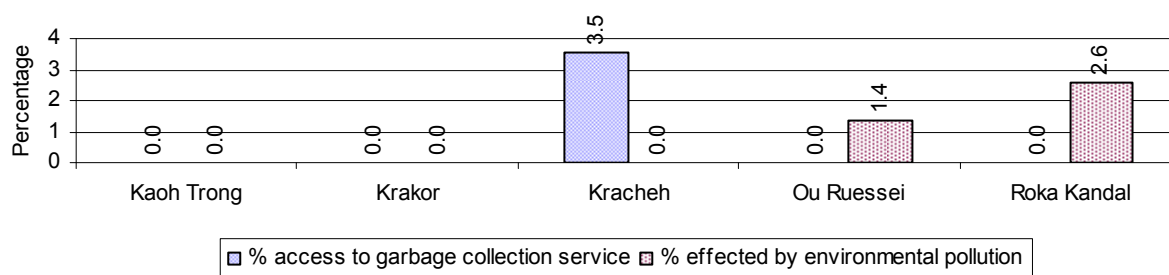
Note: Calculated as a percentage of the total number of families

4.2 Percentage of Families involved with Natural Resource issues, by Commune, for 2008



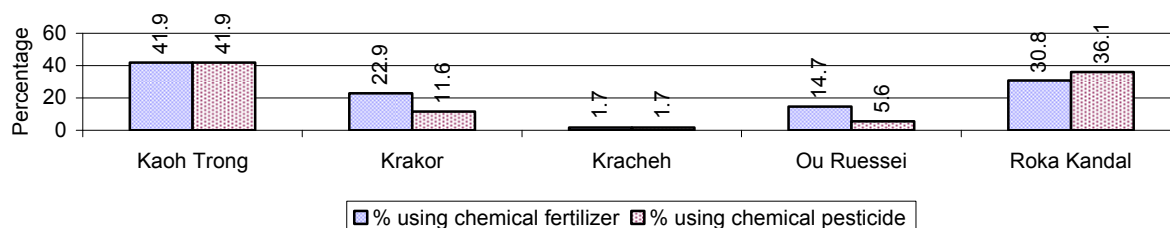
Note: Calculated as a percentage of the number of families in each commune

4.3 Percentage Houses with access to Garbage collection and Families affected by environmental Pollution, by Commune, for 2008



Note: Garbage collection is calculated as a percentage of the total number of houses in each commune and families affected by environmental pollution is calculated as a percentage of the total number of families in each commune.

4.4 Percentage Families using chemical Fertilizer and chemical Pesticides, by Commune, for 2008



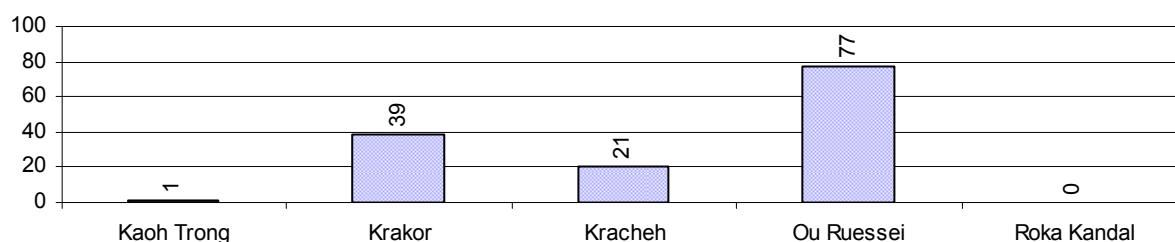
Note: Calculated as a percentage of the total number of families in each commune

5 Administration and Security

5.1 Birth Registration across 3 years

Description	2006	2007	2008
Number of infants to be registered	316 person(s)	368 person(s)	440 person(s)
Number of unregistered infants the year	100 person(s)	117 person(s)	138 person(s)
Percentage of infants unregistered	32 %	32 %	31 %

5.2 Number of unregistered Infants born in 2008, by Commune

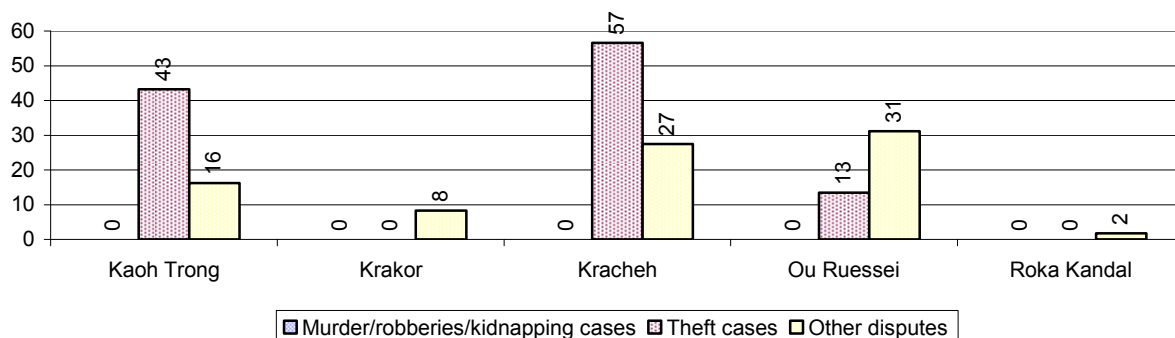


5.3 Registered criminal Cases over 3 years

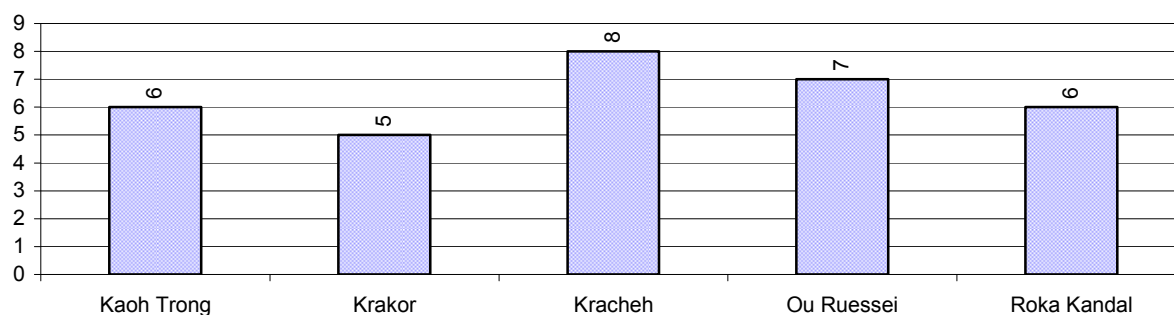
Description	2006	2007	2008
Murders, robberies and kidnapping cases	3 case(s)	1 case(s)	0 case(s)
Theft cases	88 case(s)	71 case(s)	59 case(s)
land dispute cases	35 case(s)	23 case(s)	32 case(s)
Other disputes cases	78 case(s)	54 case(s)	61 case(s)

Note: this reflects only registered criminal cases

5.4 Registered criminal Cases per 10,000 people, by Commune, for 2008



5.5 Number of registered Land Disputes, by Commune, in 2008

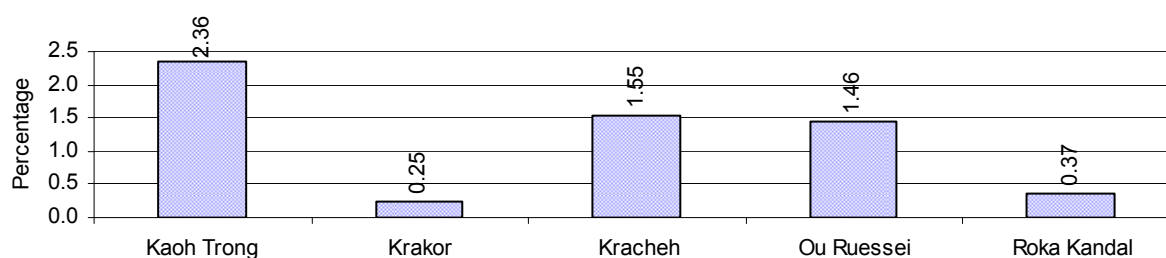


6 Gender

6.1 Registered Domestic Violence over 3 years

Description		2006	2007	2008
Families experiencing domestic violence		117 families	86 families	70 families(s)
% families experiencing domestic violence		2 %	1 %	1 %
Domestic violence cases reported by village chiefs		25 case(s)	24 case(s)	104 case(s)
Type	Physical violence	7 case(s)	11 case(s)	39 case(s)
	Sexual violence	1 case(s)	0 case(s)	1 case(s)
	Mental violence	8 case(s)	9 case(s)	55 case(s)
	Household economic violence	9 case(s)	4 case(s)	9 case(s)
Number of administrative decisions on domestic violence		20 case(s)	17 case(s)	81 case(s)
% of administrative decisions on domestic violence		80 %	71 %	78 %

6.2 Percentage of registered cases of Families experiencing domestic Violence, by Commune, in 2008



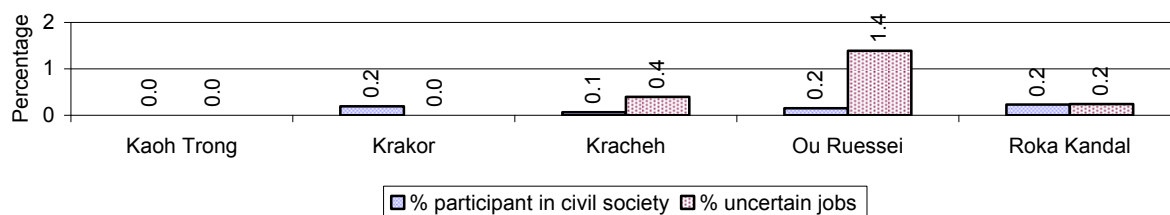
Note: Calculated as a percentage of the total number of families in each commune

6.3 Women's involvement over 3 years

Description	2006 %	2007 %	2008	
			%	Number
People participating in civil society	1%	1%	0%	121 person(s)
Women participating in civil society	0%	0%	0%	42 person(s)
People, 18-60 yrs, with uncertain/irregular jobs	2%	2%	1%	229 person(s)
Women, 18-60 yrs, with uncertain/irregular jobs	1%	1%	1%	105 person(s)

Note: Participation can be in NGOs, CBOs, credit groups, women's unions, parties and other civil society organizations. The first section is calculated as a percentage of the total population. The second section is calculated as a percentage of the total 18-60 year old population.

6.4 Percentage of Female Participants in Civil Society and of 18-60 year women with uncertain Jobs, by Commune, in 2008



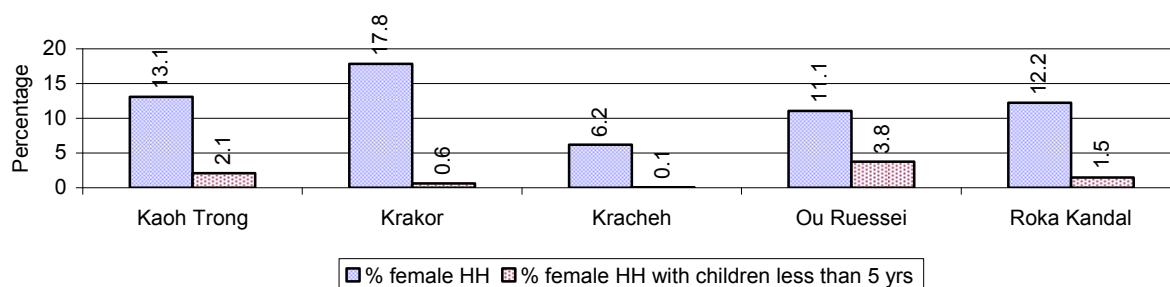
Note: Percentage of female participants in civil society is calculated as a percentage of the total population per commune. The percentage of 18-60 years old women with uncertain jobs is calculated as a percentage of the total 18-60 year old population per commune.

6.5 Female-headed Households over 3 years

Families with:	2006	2007	2008	
	%	%	%	Number
Households in which a woman is the family head	12%	12%	11%	663 families
Households in which a woman is the family head with children of less than 5 yrs	2%	1%	2%	115 families

Note: Calculated as a percentage of the total number of families

6.6 Percentage female-headed Households and with Children of less than 5 years old, by Commune, in 2008



Note: Calculated as a percentage of the total number of families in each commune
HH: Headed Household

7 Indigenous People in the District

7.1 Ethnic Minorities in the District over 3 years

Race of indigenous	2006		2007		2008	
	# families	# population	# families	# population	# families	# population
Phnong	0 families	0 person(s)	0 families	0 person(s)	0 families	0 person(s)
Kouy	0 families	0 person(s)	0 families	0 person(s)	0 families	0 person(s)
Stieng	0 families	0 person(s)	0 families	0 person(s)	0 families	0 person(s)
Mil	0 families	0 person(s)	0 families	0 person(s)	0 families	0 person(s)
Kroal	0 families	0 person(s)	0 families	0 person(s)	0 families	0 person(s)
Thmorn	0 families	0 person(s)	0 families	0 person(s)	0 families	0 person(s)
Khaonh	0 families	0 person(s)	0 families	0 person(s)	0 families	0 person(s)
Tompouonn	0 families	0 person(s)	0 families	0 person(s)	0 families	0 person(s)
Charay	0 families	0 person(s)	0 families	0 person(s)	0 families	0 person(s)
Kroeung	0 families	0 person(s)	0 families	0 person(s)	0 families	0 person(s)
Kavet	0 families	0 person(s)	0 families	0 person(s)	0 families	0 person(s)
Saouch	0 families	0 person(s)	0 families	0 person(s)	0 families	0 person(s)
Lun	0 families	0 person(s)	0 families	0 person(s)	0 families	0 person(s)
Kachak	0 families	0 person(s)	0 families	0 person(s)	0 families	0 person(s)
Praov	0 families	0 person(s)	0 families	0 person(s)	0 families	0 person(s)
Others	0 families	0 person(s)	0 families	0 person(s)	0 families	0 person(s)
Total	0 families	0 person(s)	0 families	0 person(s)	0 families	0 person(s)

Note: "Others" refer to other ethnic groups which are not listed.

7.2 Other Minorities in the District over 3 years

Minority	2006		2007		2008	
	# families	# population	# families	# population	# families	# population
Khmer Islamic	57 families	316 person(s)	55 families	298 person(s)	60 families	476 person(s)
Vietnamese	192 families	997 person(s)	221 families	992 person(s)	238 families	1,220 person(s)
Laos	0 families	0 person(s)	0 families	24 person(s)	0 families	0 person(s)

Note: Number of indigenous and minority population are additional data, so some village may not recorded.

SECTION C: PLANS AND PROJECTS

8 Priorities and Plans

8.1 Priorities of Commune Councils for 2009 in the District by Sector

The District Priority Activity Matrix (DPAM) data are taken from the CDPD. The DPAM is used for the District Integration Workshop (DIW), to show what kind of projects the commune has proposed in their Commune Investment Plan (CIP) for 2009. Donors, departments and other agencies then consider which projects they want to support and which projects they are not interested in. This results in Temporary Agreements between the Commune Council and the Supporter (NGO, Department, private donor, etc), as shown in table 8.2

No.	Project Name	Krakor	Kracheh	Roka Kandal	Ou Ruessei	Kaoh Trong	Req.Project
		100208	100209	100211	100210	100207	Total
Economic							
1	Compost fertilizer training	4 training			10 training		2
2	Chemical and pesticide application training				10 training		1
3	Mixed farming system training	2 training	6 training		10 training		3
4	Rice field demonstration			20 training	10 family		2
5	Subsidiary cropping technique training					4 time	1
6	Animal vaccination request	720 Head	3 time		2849 Head	570 Head	4
7	Village veterinary training	2 training					1
8	Animal raising training			5 training		4 training	2
9	Pig raising training		5 training				1
10	Cow raising training	4 training	6 training				2
11	Rice seed request	2400 Kg					1
12	Sow for raising request	40 Head					1
13	Pesticide request				100 bottle		1
14	Agricultural tools request					2 time	1
15	Grazing seed request					52 family	1
16	Family fish pond construction	12 place					1
17	Fish fingerling request				290 family		1
18	Asphalt road construction		1 Line				1
19	Mass concrete road construction		1 Line				1
20	Earth road repairing					2 Line	1
21	Laterite/natural gravel road repairing	1 Line	3 Line	1 Line	2 Line		4
22	Culvert repairing		2 place				1
23	Bridger repairing			2 place			1
24	Canal construction	3 Line			1 Line		2
25	Water gate construction	1 place					1

District Data Book 2009: Development Plans and Projects

No.	Project Name	Krakor	Kracheh	Roka Kandal	Ou Ruessei	Kaoh Trong	Req.Project
		100208	100209	100211	100210	100207	Total
26	Canal repairing	1 Line		1 Line	1 Line		3
27	Dam repairing	2 place		1 place	1 place	1 place	4
28	Cash credit				50 family	28 family	2
29	Cow bank	20 Head		2 Head		8 Head	3
30	Livestock bank				20 Head		1
31	Electricity supply			150 Tree	50 family		2
Social							
1	Family planning	10 time					1
2	Antenatal care	2 time					1
3	Reproductive health awareness education	10 time	10 time	10 time	5 time		4
4	Women and child health care program	4 time					1
5	HIV/AIDS awareness education	2 time	20 time		10 time		3
6	Health/hygiene education for local people				20 time		1
7	Health education service at health center			2 time			1
8	Leaflets and posters distribution					4 time	1
9	Children immunization provision	2 time					1
10	Health clinic service					2 time	1
11	DOTS mobile implementation				5 time		1
12	Mosquito nets distribution/treatment	1000 package	3184 mosqui-net				2
13	Malaria awareness education					2 time	1
14	Mosquito larvae removal treatment	1700 package					1
15	Latrine construction	160 toilet	200 toilet	500 toilet	100 toilet		4
16	Sanitation day campaign organizing		10 time				1
17	Village health post construction					1 building	1
18	Water filter equipment supply				200 Container		1
19	Water supply	1 Line					1
20	Family wate jars provision	100 m					1
21	Pump wells construction				18 well		1
22	Ring wells construction	10 place					1
23	School renovation			1 building		1 building	2
24	Kindergarten school construction/repair	1 building	1 building				2

District Data Book 2009: Development Plans and Projects

No.	Project Name	Krakor	Kracheh	Roka Kandal	Ou Ruessei	Kaoh Trong	Req.Project
		100208	100209	100211	100210	100207	Total
25	Pre-school teacher/kid keeper support	2 person					1
26	Motivating pupil's parents for school enrollment	3 time		4 time			2
27	Scholarship provision to poor pupils	74 person					1
28	Unintelligent children training to avoid school dropped				10 training		1
29	Vocational training					2 training	1
30	Bicycle/motorcycle/radio repairing skill training					2 training	1
31	Youth moral education		5 time				1
32	Emergency relief		50 family				1
33	Flood refuge mound/temporary shelter provision					1 place	1
34	Local art performance organizing		10 time				1
35	Elderly association formation/support			2 Team			1
NREM							
1	Environmental awareness and law education	2 time	10 time	5 time			3
2	Fishery law education			4 time	10 time		3
3	NREM strengthening					2 time	1
4	Flooded forest rehabilitation/planting	1000 m		300 m			2
5	Illegal fishing prevention	2 time	6 time	20 time			3
6	Strengthening fishery community					2 Fishing Community	1
7	Natural water ways/reservoirs rehabilitation/conservation	1 place			1 place		2
8	Flooded forest clearance prevention	4 time					1
9	Community flooded forestry support	4 time					1
10	Fish raising community support					10000 Head	1
11	Waste dumping creation/improvement			80 Garbage bin			1
12	Public rubbish bin sitting		20 Container				1
13	Waste collection service creation/improvement			1 set			1
14	Drainage canal construction/rehabilitation			2 place			1
15	Environmental pollution reduction	4 training					1
Administration and Security							
1	Human rights and law training				10 time		2

District Data Book 2009: Development Plans and Projects

No.	Project Name	Krakor	Kracheh	Roka Kandal	Ou Ruessei	Kaoh Trong	Req.Project
		100208	100209	100211	100210	100207	Total
2	Commune office construction/renovation			1 building	1 building	1 building	3
3	Boat/motor boat request					1 set	1
4	Land law dissemination	2 time	5 time	2 time	10 time		4
5	Provision of land titles/certificates	255 doc			1916 doc	2 time	3
6	Land use planning					1 time	1
7	New village creation/dwelling establishment		79 family			27 family	2
8	Social land concession project				120 family		1
9	People guard activities formation/strengthening			2 Team			1
10	Gambling control/elimination activation	8 time		6 time			3
11	Police post construction/renovation			1 building			1
12	Traffic sign installation				10 time		1
13	Drug abuse treatment center creation		1 place				1
14	Law/regulation dissemination	4 time					1
15	Information board provision/creation/built		2 Info-board				1
16	Penal and civil law dissemination	2 time					1
17	Hospitality and tourism law dissemination					2 time	1
18	Local development participation encouragement				2 training		1
Gender							
1	Gender mainstreaming among local people	6 time				2 time	2
2	Gender training for CC					2 time	1
3	Woman and children's rights dissemination				10 time	2 time	2
4	Women vocational training		8 person	1 time	5 time		3
5	Tailor skill training	1 person					1
6	Law against domestic violence dissemination	6 training	5 time	10 time	2 time	2 time	5
7	Rescue children & women from violence	10 time					1

Source: CDPD – District Priority Matrix

8.2 Temporary Agreements by Commune, for 2009²

At the District Integration Workshop (DIW) the Supporters (donors, agencies, private donors, NGOs, etc.) identify which projects/activities they would like to support or they put forward their own projects to be implemented in a particular commune. Once there is agreement between Commune Councils and Supporters on specific projects a **Temporary Agreement** is signed by the commune and the Supporter to show their mutual commitment to the identified projects/activities.

It is important to keep in mind that such Temporary Agreements do not necessarily result in implementation.

8.2.1 Temporary Agreements for 2009 as per DIW 2008 for Commune: Krakor

Commune GIS	Commune	Temporary Agreements				Supporter	Funding Source	Listed in CIP befor DIW
		Project Name	Quantity	Unit	Est.Cost (K.Riels)			
Economic								
100208	Krakor	Flood respond preparedness	0		0	Khmer Women Welfare Association		<input type="checkbox"/>
100208	Krakor	Income accruing and saving	0		0	Khmer Women Welfare Association		<input type="checkbox"/>
100208	Krakor	Fish raising training	1	training	200	Department of Agriculture Forestry and Fisheries		<input type="checkbox"/>
Social								
100208	Krakor	Malarial trained trainer monitoring	0		305	Partners for Development		<input type="checkbox"/>
100208	Krakor	HIV/AIDS carrier home based care	0		0	Khmer Women Welfare Association		<input type="checkbox"/>
100208	Krakor	Budget support for treatment, travel cost, food cost for patient and attendants	58	person	8680	Action For Health		<input type="checkbox"/>
100208	Krakor	Malaria awareness trainer strengthening	0		578	Partners for Development		<input type="checkbox"/>
Administration and Security								
100208	Krakor	Fishery law dissemination	1	time	200	Department of Agriculture Forestry and Fisheries		<input type="checkbox"/>
Gender								
100208	Krakor	Gender mainstreaming among local people	0	time	0	Khmer Women Welfare Association		✓
100208	Krakor	Gender mainstreaming among local people	1	person	60	Department of Women		✓
100208	Krakor	Gender mainstreaming among local people	1	person	60	Department of Women		✓

² Not all the data from the CDPD has been translated to English, this has resulted in some cells in the TA tables being blank.

8.2.2 Temporary Agreements for 2009 as per DIW 2008 for Commune: Kracheh

Commune GIS	Commune	Temporary Agreements				Supporter	Funding Source	Listed in CIP before DIW
		Project Name	Quantity	Unit	Est.Cost (K.Riels)			
Economic								
100209	Kracheh	Income generation and saving program	1	Team	500	Khmer Women Welfare Association		<input type="checkbox"/>
Social								
100209	Kracheh	Malaria awareness dissemination to community	0		600	Partners for Development		<input type="checkbox"/>
100209	Kracheh	Malaria awareness trainer strengthening	0		578	Partners for Development		<input type="checkbox"/>
100209	Kracheh	Malarial trained trainer monitoring	0		305	Partners for Development		<input type="checkbox"/>
100209	Kracheh	Budget support for treatment, travel cost, food cost for patient and attendants	102	person	15264	Action For Health		<input type="checkbox"/>
100209	Kracheh	Social morals and family education to local leaders	1	training	400	Department of Women		<input type="checkbox"/>
100209	Kracheh	Flood respond preparedness	0		0	Khmer Women Welfare Association		<input type="checkbox"/>
100209	Kracheh	HIV/AIDS carriers health care support	0		0	Khmer Women Welfare Association		<input type="checkbox"/>
Gender								
100209	Kracheh	Brainstorming forum with commune leaders and gender focal point on local gender issues	1	person	60	Department of Women		<input type="checkbox"/>
100209	Kracheh	Local leaders and CWCC focal point meeting on Gender mainstreaming in CIP	1	person	60	Department of Women		<input type="checkbox"/>
100209	Kracheh	Gender and mainstreaming	0		0	Khmer Women Welfare Association		<input type="checkbox"/>

8.2.3 Temporary Agreements for 2009 as per DIW 2008 for Commune: Roka Kandal

Commune GIS	Commune	Temporary Agreements				Supporter	Funding Source	Listed in CIP before DIW
		Project Name	Quantity	Unit	Est.Cost (K.Riels)			
Economic								
100211	Roka Kandal	Income generation and saving program	7	Team	0	Khmer Women Welfare Association		<input type="checkbox"/>
100211	Roka Kandal	Tourist association formation	3	training	700	Department of Tourism		<input type="checkbox"/>
Social								
100211	Roka Kandal	Budget support for treatment, travel cost, food cost for patient and attendants	65	person	9732	Action For Health		<input type="checkbox"/>
100211	Roka Kandal	Flood respond preparedness	0		0	Khmer Women Welfare Association		<input type="checkbox"/>
100211	Roka Kandal	HIV/AIDS carrier home based care	0		0	Khmer Women Welfare Association		<input type="checkbox"/>
100211	Roka Kandal	Refresher training to master trainers	0		578	Partners for Development		<input type="checkbox"/>
100211	Roka Kandal	Malarial trained trainer monitoring	0		305	Partners for Development		<input type="checkbox"/>
NREM								
100211	Roka Kandal	Fishery law education	1	time	200	Department of Agriculture Forestry and Fisheries		✓
Gender								
100211	Roka Kandal	Gender mainstreaming	0		0	Khmer Women Welfare Association		<input type="checkbox"/>
100211	Roka Kandal	Brainstorming forum with local leaders and gender focal point on local gender issues	1	person	60	Department of Women		<input type="checkbox"/>
100211	Roka Kandal	Gender issues in CIP discussion with local leader and focal point	1	person	60	Department of Women		<input type="checkbox"/>

8.2.4 Temporary Agreements for 2009 as per DIW 2008 for Commune: Ou Ruessei

Commune GIS	Commune	Temporary Agreements				Supporter	Funding Source	Listed in CIP before DIW
		Project Name	Quantity	Unit	Est.Cost (K.Riels)			
Economic								
100210	Ou Ruessei	Income generation	0		0	Khmer Women Welfare Association		<input type="checkbox"/>
Social								
100210	Ou Ruessei	Budget support for treatment, travel cost, food cost for patient and attendants	154	person	23048	Action For Health		<input type="checkbox"/>
100210	Ou Ruessei	Refresher training to trainer	0		578	Partners for Development		<input type="checkbox"/>
100210	Ou Ruessei	Teacher follow up monitoring after training session	0		0	Partners for Development		<input type="checkbox"/>
100210	Ou Ruessei	Social ethics and family worth awareness education to village and commune leaders	1	training	800	Department of Women		<input type="checkbox"/>
100210	Ou Ruessei	HIV/AIDS awareness education	0	time	0	Khmer Women Welfare Association		<input checked="" type="checkbox"/>
Administration and Security								
100210	Ou Ruessei	Social land concession project support	0	family	6000	Department of Land Management, Urban Planning & Construction		<input checked="" type="checkbox"/>
Gender								
100210	Ou Ruessei	Gender concept training	0		0	Khmer Women Welfare Association		<input type="checkbox"/>
100210	Ou Ruessei	Brainstorming forum with commune leaders and gender focal point on local gender mainstreaming	1	person	60	Department of Women		<input type="checkbox"/>
100210	Ou Ruessei	Local leaders and CWCC focal point meeting on Gender mainstreaming in CIP	1	person	60	Department of Women		<input type="checkbox"/>

8.2.5 Temporary Agreements for 2009 as per DIW 2008 for Commune: Kaoh Trong

Commune GIS	Commune	Temporary Agreements				Supporter	Fundin g Source	Listed in CIP befor DIW
		Project Name	Quantity	Unit	Est.Cost (K.Riels)			
Economic								
100207	Kaoh Trong	Tourist management committee establishment	3	training	1000	Department of Tourism		<input type="checkbox"/>
100207	Kaoh Trong	Income generation program	25	family	0	Khmer Women Welfare Association		<input type="checkbox"/>
Social								
100207	Kaoh Trong	Budget support for treatment, travel cost, food cost for patient and attendants	25	person	4000	Action For Health		<input type="checkbox"/>
100207	Kaoh Trong	Trainer refresher training	0		578	Partners for Development		<input type="checkbox"/>
100207	Kaoh Trong	Malarial trained trainer monitoring	0		305	Partners for Development		<input type="checkbox"/>
Administration and Security								
100207	Kaoh Trong	New village creation/dwelling establishment	0	family	6000	Department of Land Management, Urban Planning & Construction		✓
Gender								
100207	Kaoh Trong	Woman and children's rights dissemination	0	time	0	Association for Development and Human Rights of Cambodia		✓
100207	Kaoh Trong	Gender mainstreaming among local people	1	training	60	Department of Women		✓
100207	Kaoh Trong	Gender mainstreaming among local people	1	training	60	Department of Women		✓
100207	Kaoh Trong	Gender mainstreaming among local people	0	time	0	Khmer Women Welfare Association		✓

Source: CDPD, District Level Detail TA resulting from DIW

8.3 Outputs, estimated and actual costs of C/S Fund Projects between 2005 and 2008, by Commune

Commune	Project Type	Budget Year	Output		Quantity	Unit	Unit Cost MR	
			Description	Type			Estimate	Actual
Krakor	Irrigation	2005	Earth dam	Repair	0.765	Km	25.35	25.08
Krakor	Irrigation	2005	Drain pipe for flood water	New	1	Line	1.23	25.08
Krakor	Rural Transport	2006	Laterite road	Repair	0.9	Km	29.07	21.60
Krakor	Rural Transport	2007	Laterite road	Repair	1.647	Km	37.39	26.52
Krakor	Rural Transport	2007	Single pipe culvert	New	2	Place	2.70	26.52
Krakor	Rural Transport	2008	Single pipe culvert	New	2	Place	2.89	39.67
Krakor	Rural Transport	2008	Laterite road	Repair	3.334	Km	69.74	39.67
Kracheh	Rural Transport	2005	Pipe culvert (general)	New	4	Place	5.36	33.88
Kracheh	Rural Transport	2005	Laterite road	Repair	1.022	Km	29.01	33.88
Kracheh	Rural Transport	2006	Single pipe culvert	New	1	Place	2.21	15.00
Kracheh	Rural Transport	2006	Laterite road	Repair	0.473	Km	27.90	21.86
Kracheh	Rural Transport	2006	Laterite road	Repair	0.23	Km	12.23	15.00
Kracheh	Rural Transport	2006	Pipe culvert (general)	New	1	Place	1.55	15.00
Kracheh	Rural Transport	2006	Single pipe culvert	New	4	Place	7.05	21.86
Kracheh	Rural Transport	2007	Laterite road	Repair	0.645	Km	33.02	28.00
Kracheh	Rural Transport	2007	Single pipe culvert	New	3	Place	6.14	28.00
Kracheh	Rural Transport	2008	Laterite road	Repair	1.159	Km	30.83	36.00
Kracheh	Rural Transport	2008	Single pipe culvert	New	4	Place	7.63	36.00
Roka Kandal	Irrigation	2005	Earth dam	Repair	0.553	Km	16.30	24.99
Roka Kandal	Irrigation	2005	Canal	Repair	1.98	Km	9.20	24.99
Roka Kandal	Rural Transport	2006	Laterite road	Repair	0.803	Km	26.63	28.89
Roka Kandal	Rural Transport	2006	Single pipe culvert	New	4	Place	5.86	28.89
Roka Kandal	Rural Transport	2007	Laterite road	Repair	0.67	Km	26.88	23.81
Roka Kandal	Rural Transport	2007	Single pipe culvert	New	2	Place	3.12	23.81
Ou Ruessei	Irrigation	2005	Small water gate	New	1	Place	23.95	23.58
Ou Ruessei	Rural Transport	2006	Laterite road	Repair	0.78	Km	36.51	30.00
Ou Ruessei	Rural Transport	2006	Pipe culvert (general)	New	2	Place	7.53	30.00
Ou Ruessei	Rural Transport	2007	Laterite road	Repair	0.75	Km	19.90	14.98
Ou Ruessei	Rural Transport	2007	Single pipe culvert	New	1	Place	1.37	14.98
Ou Ruessei	Irrigation	2008	Canal	Repair	0.7	Km	22.88	21.50
Ou Ruessei	Rural Transport	2008	Laterite road	Repair	0.848	Km	24.73	32.44
Ou Ruessei	Rural Transport	2008	Single pipe culvert	New	5	Place	7.66	32.44
Kaoh Trong	Rural Transport	2005	Earth road	Repair	1.5	Km	20.55	19.03

Commune	Project Type	Budget Year	Output		Quantity	Unit	Unit Cost MR	
			Description	Type			Estimate	Actual
Kaoh Trong	Rural Transport	2006	Earth road	Repair	2.3	Km	23.52	21.00
Kaoh Trong	Rural Transport	2007	Earth road	Repair	3.1	Km	35.43	27.00
Kaoh Trong	Rural Transport	2008	Earth road	Repair	2.44	Km	54.07	30.01

Source: PID

8.4 Total Expenditure on C/S Fund Projects by sector and commune between 2005 and 2008

Sector	Total Cost in Million Riels				
	Krakor	Kracheh	Roka Kandal	Ou Ruessei	Kaoh Trong
Irrigation	25.08		24.99	45.08	
Rural Transport	87.80	134.74	52.69	77.42	97.04

Source: PID

8.5 Actual 2009 C/S Fund projects by Commune

Commune	Project Type	Project Output		Quantity	Unit	Fund Source (Riels)		
		Description	Type			Total	C/S	Local Contribution
Bos Leav	Rural Transport	Natural Gravel road	Repair	1	km	73,400,232	72,900,232	500,000
Bos Leav	Rural Transport	Double pipe culvert 1.0m diameter	New	1	Place	73,400,232	72,900,232	500,000
Bos Leav	Rural Transport	Single pipe culvert 0.6m diameter	New	1	Place	73,400,232	72,900,232	500,000
Bos Leav	Rural Transport	Natural Gravel road	Repair	1.7	km	73,400,232	72,900,232	500,000
Bos Leav	Rural Transport	Single pipe culvert 1.0m diameter	New	1	Place	73,400,232	72,900,232	500,000
Changkrang	Rural Transport	Earth road	Repair	1.916	km	28,147,874	27,647,874	500,000
Changkrang	Rural Transport	Single pipe culvert 0.6m diameter	New	2	Place	28,147,874	27,647,874	500,000
Dar	Rural Transport	Earth road	Repair	0.7	km	37,589,710	37,189,710	400,000
Dar	Rural Transport	Single pipe culvert 0.6m diameter	New	1	Place	37,589,710	37,189,710	400,000
Dar	Rural Transport	Earth road	Repair	0.245	km	37,589,710	37,189,710	400,000
Dar	Rural Transport	Single pipe culvert 0.6m diameter	New	1	Place	37,589,710	37,189,710	400,000
Dar	Rural Transport	Earth road	Repair	0.66	km	37,589,710	37,189,710	400,000
Kantuot	Rural Transport	Natural Gravel road	Repair	0.8	km	50,930,191	50,430,191	500,000
Kantuot	Rural Transport	Single pipe culvert 1.0m diameter	New	1	Place	50,930,191	50,430,191	500,000
Kantuot	Rural Transport	Single pipe culvert 0.6m diameter	New	1	Place	50,930,191	50,430,191	500,000
Kantuot	Rural Transport	Natural Gravel road	Repair	1.5	km	50,930,191	50,430,191	500,000
Kantuot	Rural Transport	Single pipe culvert 0.6m diameter	New	2	Place	50,930,191	50,430,191	500,000
Kou Loab	Rural Transport	Natural Gravel road	Repair	0.104	km	33,081,348	32,581,348	500,000

District Data Book 2009: Development Plans and Projects

Commune	Project Type	Project Output		Quantity	Unit	Fund Source (Riels)		
		Description	Type			Total	C/S	Local Contribution
Kou Loab	Rural Transport	Natural Gravel road	Repair	0.252	km	33,081,348	32,581,348	500,000
Kou Loab	Rural Transport	Natural Gravel road	Repair	0.066	km	33,081,348	32,581,348	500,000
Kou Loab	Rural Transport	Natural Gravel road	Repair	0.342	km	33,081,348	32,581,348	500,000
Kou Loab	Rural Transport	Single pipe culvert 0.8m diameter	New	1	Place	33,081,348	32,581,348	500,000
Kou Loab	Rural Transport	Natural Gravel road	Repair	0.36	km	33,081,348	32,581,348	500,000
Kaoh Chraeng	Rural Domestic Water Supplies	Ring well (general)	New	2	Place	17,169,171	16,669,171	500,000
Kaoh Chraeng	Education	Brick school 7 rooms with zinc roof, concrete floor	Repair	1	Place	38,711,640	38,011,640	700,000
Sambok	Rural Transport	Earth road	Repair	0.516	km	35,788,287	35,288,287	500,000
Sambok	Rural Transport	Earth road	Repair	0.583	km	35,788,287	35,288,287	500,000
Sambok	Rural Transport	Earth road	Repair	0.55	km	35,788,287	35,288,287	500,000
Sambok	Rural Transport	Double pipe culvert 1.0m diameter	New	1	Place	35,788,287	35,288,287	500,000
Thma Andaeuk	Rural Transport	Natural Gravel road	Repair	1.83	km	31,180,540	30,980,540	200,000
Thma Andaeuk	Rural Transport	Single pipe culvert 0.8m diameter	New	1	Place	31,180,540	30,980,540	200,000
Thma Andaeuk	Rural Transport	Single pipe culvert 0.6m diameter	New	1	Place	31,180,540	30,980,540	200,000
Thma Kreae	Rural Transport	Earth road	Repair	0.688	km	31,580,911	31,080,911	500,000
Thma Kreae	Rural Transport	Earth road	Repair	1.35	km	31,580,911	31,080,911	500,000
Thma Kreae	Rural Transport	Single pipe culvert 0.6m diameter	Repair	1	Place	31,580,911	31,080,911	500,000
Thma Kreae	Irrigation	Earth dam	Repair	0.095	km	9,980,000	9,780,000	200,000
Thma Kreae	Irrigation	Double cell box culvert 3.0m x 2.0m with stop logs	Repair	1	Place	9,980,000	9,780,000	200,000
Thmei	Rural Transport	Natural Gravel road	Repair	1.89	km	42,093,827	41,593,827	500,000
Thmei	Rural Transport	Single pipe culvert 0.6m diameter	New	3	Place	42,093,827	41,593,827	500,000

Source: PID

9 District level Projects from 2006 to 2009

District Initiative Projects (DIPs) are funded by Danida, DFID and PSDD (UNDP, DFID and SIDA).

Funding for 2006-2008

Between 2006 and 2008 there were 14 provinces funded by PSDD and 10 by Danida and DFID. The list of provinces and who funded these is below

Danida and DFID funded DIPs:

Kampong Cham	Kampong Speu	Koh Kong	Kratie	Monduliri
Pursat	Ratanakiri	Siem Reap	Sihanoukville	Kep

PSDD funded DIPs:

Banteay Meanchey	Battambang	Kampong Chhnang	Kandal	Phnom Penh
Prey Veng	Svay Rieng	Takeo	Kampong Thom	Preah Vihear
Stung Treng	Kampot	Oddar Meanchey	Pailin	

Funding for 2009

In 2009 there was a change to the number of provinces funded by the two streams. Danida and DFID were still funding the same 10 provinces they had been funding the previous three years, but two more provinces were added *Kampong Thom and Kampot*. Now PSDD funds 12 provinces and Danida and DFID fund 12.

9.1 District Initiative Infrastructure Projects from 2006 to 2009

9.1.1 District Initiative Infrastructure Projects for 2006 to 2008

Date	Project Name	Implementing Agencies	Budget (US\$)	Project Output & Capacity	Number of Beneficiaries
2007	Repair canal and dam of Tranoul Chhang and Chroy Pon Leu	Inter-commune	20,250.00		
2008	Beoung Rang and Koh Tonsay Dam rehabilitation	Inter-commune	14,700.00	305m and 3 culverts with gate	354 persons.
2008	O Khnoung Canal rehabilitation	Inter-commune	4,900.00	5000m	2357 persons.
2008	Khal Kanthom reservoir rehabilitation	Inter-commune	2,000.00	600m	264 persons

9.1.2 District Initiative Infrastructure Projects in 2009

No District Initiative Infrastructure Projects have been implemented in this district for 2009

9.2 District Initiative Service Projects from 2006 to 2009

9.2.1 District Initiative Service Projects for 2006 to 2008

Date	Project Names	Implementing agencies	Budget (US\$)	Project Output & Capacity	Number of Beneficiaries
2007	Dissemination on vaccination for cattle and buffaloes	District Agri	592.50		
2007	Dissemination on land management and NRM	District Land	1,037.50		
2007	Education on prevention from illegal fishing activities	District Agri	755.00		
2007	Training on food processing for women	District WA	1,243.50		
2007	Training on cultivation of dry season rice	District Agri	1,310.00		
2007	Training and demonstration on agriculture integrated farming.	District Agri	1,042.00		
2007	Training on family fish raising	District Agri	427.50		
2008	Training on family fish raising technique and fingerling providing	Fishery Admin	2,614.00	47 households	235 persons
2008	Training and establish family fingerling station	District AGRI	2,000.00	1 station	750 persons
2008	Training and demonstration on corn, rice planting technique	District AGRI	1,620.00	9 courses	180 persons
2008	Training and demonstration on natural fertilizer (Compost making)	District AGRI	711.80	4 courses	100 persons
2008	Training and demo on integrated farming system (home garden, pesticide)	District AGRI	720.00	4 courses	100 persons
2008	Training on family animal raising and animal food making technique	District AGRI	2,160.00	12 courses	400 persons
2008	Establish agriculture development community (rice and corn seed)	District AGRI	474.00	2 communities	60 persons
2008	Strengthening Beoung Tros inundated forest conservation community	Fishery Admin	462.00	1 community	62 persons

9.2.2 District Initiative Service Projects in 2009

Project Name	Sector	Implementing Agency	Budget	Project outputs/ capacities	No. of Beneficiaries		Progress	Remarks on Issues of Progress
					Total	Female		
Training and demonstration on integrated farming system (home garden, pig, chicken and duck...)	AGR	PMC	\$2,700.00	3 courses	52	27	0%	
Training and provide Cow Bank	AGR	PMC	\$5,400.00	15 caws	78	40	0%	
Training and demonstration on rice planting technique	AGR	PMC	\$1,500.00	4 courses	286	148	0%	
Training and demonstration on corn planting technique	AGR	PMC	\$1,000.00	3 courses	338	175	0%	
Strengthening and new establish corn community development	AGR	DoAG	\$1,313.00	3 communities	338	175	0%	
Training and demonstration on chemical fertilizer, pesticide and EM fertilizer	AGR	PMC	\$800.00	2 courses	260	135	0%	
Strengthening water user community in Boun Ronglach	WRM	PMC	\$1,386.00	1 community	320	166	0%	Still feasibility study

9.3 Inter Commune Council Projects in 2008 and 2009

9.3.1 ICC Projects in 2008

No ICC projects in this district at this time

9.3.2 ICC Projects in 2009

No ICC projects in this district at this time

Source: ICC project, Ministry of Interior (DoLA), -UNDP project for Local Governance – DDLG

9.4 Other Projects in 2008 and 2009

9.4.1 RPRP

There are no RPRP projects being implemented in this district or province at this time. The RPRP is only being implemented in Svay Rieng and Prey Veng

9.4.1.1 RPRP Projects from 2006 to 2008

No RPRP projects in this district at this time

9.4.1.2 RPRP Projects in 2009

No RPRP projects in this district at this time

9.4.2 Seth Korma

9.4.2.1 Seth Korma 2007

There are no Seth Korma projects being implemented in this district or province at this time.

Source: UNICEF

9.4.2.2 Seth Korma 2008

There are no Seth Korma projects being implemented in this district or province at this time.

Source: UNICEF

9.4.2.3 Seth Korma 2009

There are no Seth Korma projects being implemented in this district or province at this time.

Source: UNICEF

SECTION D: SERVICES AND ORGANIZATIONS

10 Infrastructure

10.1 Length of and Expenditure on Roads in 2008, by District

Roads	Kratie	Chhlong	Chetrborei	Preaekbrasop	Sambor	Snoul	Kratie
Length of paved road in the district	280	27	70	0	85	73	25
Length of unpaved roads in the district	364	69	96	153	0	0	46
Amount spent on construction of roads in 2008 (\$)	33,727	n/a	33,727	0	n/a	n/a	n/a
Amount spent on repair and rehabilitation of roads in 2008 (\$)	41,867	n/a	0	41,867	n/a	n/a	n/a

Note 1: Please note that these data are not necessarily complete or correct. The data are derived from government agencies at provincial and district level which used different recording systems, did not always have complete data or were, sometimes, less than willing to share their data.

Note 2: Please be aware that these data are incomplete due to the fact that the amounts for the construction, repair and rehabilitation recorded reflect only funds provided by the government, not the contributions by any other parties.

10.2 Scale of and Expenditure on Irrigation in 2008, by District

Irrigation	Kratie	Chhlong	Chetrborei	Preaekbrasop	Sambor	Snoul	Kratie
Number of irrigation schemes operating in 2008	83	47	n/a	10	18	3	5
Total nr of hectares under irrigation in dry season 2008	7,388	2,881	1,489	1,671	135	315	897
Total funds spent in 2008 on construction of irrigation systems (\$)	10,200	0	n/a	0	n/a	10,200	n/a
Total funds spent in 2008 on rehabilitation/repair of irrigation systems (\$)	465,226	22,218	n/a	443,008	n/a	0	n/a
Total funds spent in 2008 on operation and maintenance (\$)	14,985	0	n/a	14,985	n/a	0	n/a

Note 1: Please note that these data are not necessarily complete or correct. The data are derived from government agencies at provincial and district level which used different recording systems, did not always have complete data or were, sometimes, less than willing to share their data.

Note 2: Please be aware that the data above are incomplete as these only reflect funds provided by the government, not the contributions by farmers or other parties.

10.3 Power Supply in 2008, by District

Electricity	Kratie	Chhlong	Chetrborei	Preaekbrasop	Sambor	Snoul	Kratie
Total number of electricity connections to households	7,852	1,542	0	1,181	400	850	3,879
Total number of electricity connections to agencies, companies, organizations	12	n/a	0	2	5	5	n/a
Total volume in KWh of electricity consumed last in 2008	843,973	n/a	0	40,973	36,000	800,000	n/a
Total amount collected from users for consumed electricity (in KR) (\$)	176,643	n/a	0	32,643	0	144,000	n/a
Per capita electricity consumption in 2008 in Kwh	13	n/a	0	48	15	250	n/a

Note 1: Please note that these data are not necessarily complete or correct. The data are derived from government agencies at provincial and district level which used different recording systems, did not always have complete data or were, sometimes, less than willing to share their data.

Note 2: These data only record electricity provided by electricity companies and does not include homes powered by generators or batteries (for this information see Section B: General Profile, Part 1: General Information; table 1.3.1 and chart 1.3.4).

Note 3: In most provinces electricity is only provided through town-based networks

Note 4: Per capita consumption is calculated by dividing the total volume of electricity produced in 2008 by the number of people living in each district as per the 2008 census (for the provincial data it is calculated against the number of people living in the province)

11 Health Facilities

Please note that the Operational District (health) boundaries are different to the administrative district boundaries. Therefore the data provided here shows the facilities, staff, NGOs etc in each Operational District within the province NOT the administrative district.

Acronyms

Com Cov	Commune Covered	MW2	Secondary Midwives
CPA	Complementary Package of Activities	NU1	Primary Nurse
Dr	Doctor	NU2	Secondary Nurse
FDH	Former District Hospital	OD	Operational District
HC	Health Center	Others	Other Staff
HC (NB)	Health Center no building	PHD	Provincial Health Department
HP	Health Post	Pop 04-05	Population Covered 2004 or 2005
MA	Medical Assistant	RH	Referral Hospital
MPA	Minimum Package of Activities	Vil Cov	Village Covered
MW1	Primary Midwives	VIL-HC	Distance from Village to Health Center

11.1 Health Facilities in the Province, by Operational District

Kratie	OD	RH	HC	HP
Chhlong	1	1	10	3
Kratie	1	1	12	5
Total	2	2	22	8

11.2 Health Facilities and Staff in the province, by Operational District

This table shows health facilities, staff and coverage of health facilities in each operational district.

No	Facility Name	Type	Class	Dr	Ma	Nu2	Nu1	Mw2	Mw1	Others	Com Cov	Vil Cov	Pop. 04-05
Chhlong													
1	Chambak	HC	MPA	0	0	2	2	1	2	2	2	11	15,886
2	Chroy Thma	HC	MPA	0	0	1	1	1	2	2	4	11	15,471
3	Damrei Phong	HC	CPA	0	0	0	2	0	0	4	2	6	3,348
4	Daun meas	HP	None+MI	0	0	0	0	0	0	0	1	1	2,202
5	Kanhchor	HC	MPA	0	0	1	3	2	1	1	3	10	14,508
6	Khsach Andet	HC	MPA	0	0	2	2	2	1	1	2	7	19,998
7	Khsem	HC	MPA	0	0	2	2	1	0	4	2	9	7,291
8	Pongro	HC	MPA	0	0	1	1	1	0	4	3	8	14,821
9	Preaek Prasob	FDH	CPA+MPA	0	2	3	5	1	2	4	1	9	12,353
10	Snuol	FDH	CPA+MPA	1	2	6	6	4	0	8	3	20	24,506

District Data Book 2009: Development Plans and Projects

No	Facility Name	Type	Class	Dr	Ma	Nu2	Nu1	Mw2	Mw1	Others	Com Cov	Vil Cov	Pop. 04-05
11	Srae Roneam	HP	None+MI	0	0	0	0	0	0	0	1	1	1,084
12	Stueng Thum	HP	None+MI	0	0	0	0	0	0	0	1	1	1,122
Total:				1	4	18	24	13	8	30	25	94	132,590
Kratie													
1	Ta Mau	HC	MPA	0	0	1	3	1	2	1	2	11	13,261
2	Bos Leav	HC	MPA	0	0	1	3	0	1	4	2	13	10,698
3	Chrouy Banteay	HC	MPA	0	0	2	2	2	1	2	1	7	9,218
4	Kantuot	HC	MPA	0	0	1	3	0	2	2	3	20	16,617
5	Ou Krieng	HC	MPA	0	0	1	2	0	1	3	4	21	14,463
6	Ou Ruessei	HC	MPA	0	0	1	4	3	2	1	3	12	18,197
7	Rakar Kandal	HC	MPA	0	1	0	3	2	3	1	2	7	12,264
8	Sambo	FDH	CPA+MPA	0	1	2	5	1	1	5	4	21	20,157
9	Sandan	HC	MPA	0	0	1	6	0	0	4	4	13	14,476
10	Saob	HC	MPA	0	0	2	3	0	0	3	3	10	12,012
11	Svay Chreah	HC	MPA	0	0	2	1	1	0	2	2	9	7,803
12	Thma Krae	HC	MPA	0	0	1	7	2	0	1	3	7	12,377
Total:				0	2	15	42	12	13	29	33	151	161,543
Total All				1	6	33	66	25	21	59	58	245	294,133

Source: MEDiCAM – Infrastructure - (http://www.medicam-cambodia.org/hsi/health_system/srch/index.asp?cboLcn=6&cmdSearch=Search&cboCHName=&cboType=)

11.3 Deliveries in 2007 in the Province, by Operational District

OD	Deliveries	Deliveries at home		Deliveries	Total deliveries	Total deliveries
	at HC	By Health Staff	ByTBAs	at RH	by Health Staff	by health staff and TBAs
Chhlong	47	592	656	232	871	1527
Kratie	199	504	1304	558	1261	2565
<i>Sub-total</i>	<i>246</i>	<i>1096</i>	<i>1960</i>	<i>790</i>	<i>2132</i>	<i>4092</i>

Source: MoH, Annual Statistics 2007

12 Education³

12.1 Schools, Classes, Students, Staff, for all levels, for 2007/2008 by District

District	Number of Schools	Disadv. Schools	Number of Classes	Classes in Pagoda	Enrollment		Repeaters		Teaching Staff		Non-Teaching Staff		Total Staff	
					Total	Girl	Total	Girl	Total	Female	Total	Female	Total	Female
Chhlaung	41	1	357	0	12,802	6,162	919	390	398	223	75	19	473	242
Kratie	100	2	645	2	22,559	10,572	1,833	763	729	399	146	51	875	450
Prek Prasap	66	0	449	0	15,214	7,301	1,423	561	542	299	96	21	638	320
Sambo	57	1	360	0	12,676	6,164	1,401	624	238	84	29	8	267	92
Snuol	54	1	302	7	12,182	5,663	1,449	643	200	58	22	4	222	62
Whole Province	318	5	2,113	9	75,433	35,862	7,025	2,981	2,107	1,063	368	103	2,475	1,166
- Urban Area	100	2	645	2	22,559	10,572	1,833	763	729	399	146	51	875	450
- Rural Area	161	2	1,108	7	40,198	19,126	3,791	1,594	1,140	580	193	44	1,333	624
- Remote Area	57	1	360	0	12,676	6,164	1,401	624	238	84	29	8	267	92

12.2 Characteristics of Schools and School Principals for 2007/2008 by Commune

Commune	Number of Schools				2 - Shift	Floating	Schools	Attached	Schools Without		Characteristics of School Principals (Incharge)			
	Pre-Sch	Primary	College	Lycee	Schools	Schools	in Pagoda	Pre-Sch	Water Sup.	Latrine	Avg. Age	Avg. Service	U.Sec+ Ed.	Female
Krakor	1	2	1	0	0	0	1	1	2	1	44.2	20.0	1	0
Kracheh	1	3	1	1	4	0	1	0	2	1	44.1	21.0	3	2
Roka Kandal	1	1	1	0	2	0	0	1	2	1	51.2	23.7	0	2
Ou Ruessei	4	5	1	1	4	0	2	4	6	4	46.6	21.4	0	2
Kaoh Trong	0	2	1	0	0	0	1	0	0		42.7	19.3	0	1

³ All the data for section 12 comes from the Ministry of Education, Youth and Sport (MoEYS)

12.3 Enrolment by Level of Education, 2006/2007 by Commune

Commune	School	Pre school		Primary School		Lower Secondary School		Upper Secondary School		Enrolment	
		Total	Female	Total	Female	Total	Female	Total	Female	Total	Female
Krakor	4	61	29	498	235	78	29	0	0	637	293
Kracheh	6	193	98	1303	606	457	196	1470	638	3423	1538
Roka Kandal	3	66	26	648	307	160	67	0	0	874	400
Ou Ruessei	9	118	51	1965	926	1317	654	376	189	3776	1820
Kaoh Trong	2	0	0	236	109	0	0	0	0	236	109

12.4 Enrolment by Level of Education, 2007/2008 by Commune

Commune	School	Pre school		Primary School		Lower Secondary School		Upper Secondary School		Enrolment	
		Total	Female	Total	Female	Total	Female	Total	Female	Total	Female
Krakor	4	48	25	469	211	134	55	0		651	291
Kracheh	6	175	85	1226	584	491	218	1436	614	3328	1501
Roka Kandal	3	100	42	600	290	288	147	0		988	479
Ou Ruessei	11	140	74	1887	867	956	472	827	362	3810	1775
Kaoh Trong	3	0	0	225	100	32	15	0		257	115

12.5 Aspects of Enrolment for 2007/2008 by Commune

Commune	% Repeaters (Total)			% Over-age Enrollment (Total)			% Repeaters (Girl)			% Over-age Enrollment (Girl)		
	Primary	L.Sec.	U.Sec.	Primary	L.Sec.	U.Sec.	Primary	L.Sec.	U.Sec.	Primary	L.Sec.	U.Sec.
Krakor	6.4	0.0	0.0	14.3	23.1	0.0	4.3	0.0	0.0	13.3	5.5	0.0
Kracheh	9.4	0.6	0.6	12.3	29.5	46.9	8.4	0.0	0.3	12.0	26.6	39.9
Roka Kandal	5.5	3.5	0.0	18.0	23.6	0.0	5.5	3.4	0.0	15.9	18.4	0.0
Ou Ruessei	10.8	2.2	0.0	22.2	47.5	24.4	6.8	0.8	0.0	23.0	43.6	23.5
Kaoh Trong	9.8	0.0	0.0	20.4	21.9	0.0	10.0	0.0	0.0	18.0	20.0	0.0

12.6 School Buildings for all schools in the District for 2007/2008, by Commune

Commune	Total Number of		Concrete/Brick Structure		Wooden Structure		Bamboo Structure		New Buildings		Buildings Without Good		
	Buildings	Rooms	Buildings	Rooms	Buildings	Rooms	Buildings	Rooms	Repaired	Constructed	Floor	Roof	Wall
Krakor	8	29	4	17	4	12	0	0	0	1	4	3	5
Kracheh	19	80	18	76	1	4	0	0	1	0	4	1	15
Roka Kandal	9	29	4	15	5	14	0	0	0	2	1	1	1
Ou Ruessei	20	87	12	63	8	24	0	0	1	1	3	1	1
Kaoh Trong	5	17	1	4	4	13	0	0	1	0	1	1	0

12.7 Conditions of Classrooms and Existence of Separate School Office and Library, by Commune

Commune	Number of Class rooms	Number of Classrooms			Classrooms Without Good			Number of Furniture needed				Schools with Separate	
		in Pagoda	New Repaired	New Constr.	Floor	Roof	Wall	Desks	Chairs	Black-board	Teacher Table	Office	Library
Krakor	22	2	0	5	13	8	16	0	0	0	0	3	1
Kracheh	56	0	10	0	18	4	7	140	140	15	15	3	3
Roka Kandal	18	0	0	7	2	2	2	0	0	0	3	2	1
Ou Ruessei	73	0	3	2	6	3	3	70	70	0	0	7	4
Kaoh Trong	12	0	3	0	3	3	0	0	0	0	0	3	1

12.8 Community Participation and Financing across all schools in the District for 2007/2008 by Commune

Commune	Parent Association				Comm. Teachers	Teaching Monks	PAP Fund (Riel)		Number of Schools Obtaining Funds from				
	Exists	Held Meet	Total	Female			per Student	per School	Sch. Income	Community	Gvt. For building	Abroad	IOs/NGOs
Krakor	4	4	10	3	0	0	10,179	1,689,667	0	0	0	0	0
Kracheh	5	5	6	1	0	0	5,151	3,327,728	0	1	0	0	1
Roka Kandal	2	2	5	2	0	0	8,636	2,797,950	0	0	0	0	1
Ou Ruessei	10	10	6	2	0	0	12,081	5,524,000	0	0	1	0	0
Kaoh Trong	3	3	5	1	0	0	12,500	1,475,000	0	1	0	0	0

12.9 Percentage Student Flow Rates and Graduation by level 2006/2007, by Commune

Commune	Primary Level (Grades 1-6)			Lower Secondary Level (Grades 7-9)			Upper Secondary Level (Grades 10-12)			Successful Candidates		
	Promotion	Repetition	Dropout	Promotion	Repetition	Dropout	Promotion	Repetition	Dropout	Grade 6	Grade 9	Grade 12
Krakor	88.6	6.0	5.4	98.7	0.0	1.3	0.0	0.0	0.0	79	0	0
Kracheh	86.4	8.8	4.8	92.6	0.7	6.8	95.0	0.5	4.4	174	105	452
Roka Kandal	92.0	5.1	2.9	82.5	6.3	11.3	0.0	0.0	0.0	104	0	0
Ou Ruessei	79.8	10.3	9.9	80.5	1.6	17.9	76.6	0.0	23.4	209	408	0
Kaoh Trong	84.7	9.3	5.9	0.0	0.0	0.0	0.0	0.0	0.0	28	0	0

13 Staff and Resources at the District

This chapter presents data from the District Information System, collected around the middle of 2009 unless otherwise specified.

13.1 District Councilors elected in 2009

Name	Sex	Year of Birth	Function	Phone
សំ ស៊ី	M	08-02-51	Chairperson of The Council	012-295 242
ឈ្មោះ ផាត	M	04-05-41	Councillor	011-664 445
សេង ផន	M	1945	Councillor	092-965 161
ឈឹម ណារីន	F	18-03-54	Councillor	012-927 109
សុខ អ៊ាងម៉េង	M	07-04-46	Councillor	099-916 174
គង់ សម្បត្តិ	M	13-03-52	Councillor	012-476 108
ស្វាយ ខុន	M	03-02-48	Councillor	012-939 155
ភន កុងផៃ	M	03-02-51	Councillor	011-753 025
សា សន	M	10-10-47	Councillor	092-750 889
ហាម ណាងហាន់	M	1951	Councillor	
ស៊ុន វ៉ៃ	M	05-04-56	Councillor	
ថាប តុម	M	13-05-51	Councillor	
គង់ សេងហុង	M	16-04-56	Councillor	

13.2 Committees of the Council

Please note at the time of producing the district data books the composition of the committees was not known for all district councils and therefore data were not available for 13.2.1, 13.2.2, 13.2.3.

13.2.1 Technical Facilitation Committee

13.2.2 Women's and Children's Affairs Committee

13.2.3 Procurement Committee

13.3 Board of Governors

Name	Sex	DoB	Function	Salary Level	Body	Phone
ហៀ ស៊ីយ៉ែម	M	1960	Municipality governor	ក.ព.៧	High Ranking Civil Servant	012-938 119
វ៉ៃ សំអាត	M	1953	Municipality deputy governor	ខ.ព.៧	Medium Civil Servant	012-947 910
កាន់ វ៉ៃ	M	1974	Municipality deputy governor	ក.ព.១០	High Ranking Civil Servant	011-263 340
កុយ សំបូរ	F	1980	Municipality deputy governor	គ.ព.១៣	Other Function	012-692 434

13.4 Offices under Sala Krong, Sala Srok and Sala Khan

Office Name	Chief		Deputy Chief		No. of Staff				Office Area (m2)	No of vehicle (public or program)	
					State		Contract			vehicle	moto
	M	F	M	F	M	F	M	F			
District/ Khan Cabinet	1	0	1	0	4	4	1	0	0	0	0
Adminnistration Office	1	0	1	0	0	0	0	0	18	0	0
Economy Office	1	0	0	1	0	0	0	0	0	0	0
Social Affair Office	1	0	1	0	0	0	0	0	0	0	0

13.5 Municipality/District/Khan line offices

Office Name	Chief		Deputy Chief		No. of Staff				Office Area (m2)	No of vehicle (public or program)	
					State		Contract				
	M	F	M	F	M	F	M	F		vehicle	moto
Planning Office	1	0	0	0	0	0	0	0	0	0	0
Women Affairs Office	0	0	0	1	0	0	0	0	0	0	0
Environment Office	0	0	1	0	0	0	0	0	0	0	0
Education Office	1	0	1	0	4	2	0	0	32	0	0
District/ Khan Operational Office	1	0	2	0	12	4	0	0	208	1	8
Agriculture Office	1	0	0	0	3	0	0	0	0	0	0
Social Affairs Office	0	0	0	0	0	1	0	0	0	0	0
Cult and Religion Office	1	0	0	0	0	0	0	0	0	0	0
Lan Management Office	1	0	0	0	2	0	0	0	80	0	1
Water Resources Office	1	0	0	0	0	0	0	0	0	0	1

13.6 Properties and Equipment of District Administration

13.6.1 Buildings

Description	Unit	Number	Remark
Office building type			
- Concrete	building	2	
- Wood	building	0	
- Mixed	building	0	
Total floor space	m2		
- Concrete	m2	413.39	
- Wood	m2	0	
- Mixed	m2	0	
Building condition			
- Concrete	%	70	
- Wood	%	0	
- Mixed	%	0	
Office reserved land area	m2	0	
Total office land area	m2	5,000	

13.6.2 Means of Transport available at the District Administration

Description	Unit	Number	Remark
Vehicle (type, size and condition)	Vehicle	0	
Motorcycle (type, size and condition)	Motor	0	

13.6.3 Equipment in District Offices

Description	Unit	Number	Remark
Generator	per set	1	
Photocopy machine at the office	per set	0	
Private photocopy machine at the district town	place	2	
Telephone network (mobile line service)	network	9	012,17,092,097,089,099,011,015,016
Telephone network (land line service)	network	1	072
Fax (include Fax number)	per set	0	
Computer	per set	1	
Printer	per set	1	
Scanner	Per set	0	
Number of computers those can access Internet and email services in the municipality/ district/khan office (including the technical line offices (please provide the email address)	set	0	
Typewriters (including the technical line offices)	per set	1	
Staff of Municipality/district/khan office can use computer	person	0	

13.6.4 Equipment and facilities at the District Town

Description	Unit	Number	Remark
Availability of electricity at noon	Nr Hours	12	
Private internet and email services in the municipality/ district/khan town.	place	2	

13.7 Registered Revenue of the District Administration in 2008⁴

13.8 Services in the District

13.8.1 Public Sector Services

Type of Infrastructure/services	Unit	Number	
		Public	Private
Schools			
Pre-school	room	17	0
Primary School	room	130	0
Secondary school	room	30	0
High School	room	59	0
University	room		
Health			
Health post	place		
Health center	place	2	0
Referral Hospital	bed	150	0

⁴ Please note that the data in this table are at best estimates. If the table appears blank it does not mean there is no revenue, just that the data have not been recorded/entered.

13.9 Civil Society Organizations active in the District

13.9.1 NGOs, Associations, Programs and Projects

Name	Abbr.	Sector Activities	No. of Target Communes	No. of Target Villages	Office in District
Ofarm	None	គ្រោះមហន្តរាយដោយទឹកជំនន់	0	0	Yes
Ofarm	None	កសិកម្មធនាគារសត្វ-ស្រូវ សុខភាពបឋម រៀបចំសហគមន៍នេសាទ	0	0	Yes
CWARS	CWARS	បណ្តុះបណ្តាលវិជ្ជាជីវៈជនពិការដោយសង្គ្រាម និងកំណើត	0	0	Yes
WODAC	WODAC	បណ្តុះបណ្តាលវិជ្ជាជីវៈគ្រប់ជំនាញ	0	0	Yes
WCRD	None	អប់រំកំរងសាលា និងអន្តរកម្ម ឥណទានប្រាក់	0	0	Yes
WAY	WAY	កម្មវិធីសុខភាពយេនឌ័រ	0	0	Yes
VIC	None	ស្ថាប័នសុខភាពពលកម្ម	0	0	Yes
ADHOC	ADHOC	អប់រំសិទ្ធិមនុស្ស ទទួលបានបញ្ញឹង ចុះអង្កេត និងអន្តរាគមន៍ -ប្រឹក្សាយោបល់ផ្នែកច្បាប់	0	0	Yes
KWWA	KWWA	អប់រំសុខភាពយេនឌ័រ សមាគមន៍គ្រប់គ្រងគ្រោះមហន្តរាយ	0	0	Yes

13.9.2 Political Parties active in the Municipality, District and Khan

Name	Abbr.	Office in District
Cambodian People Party	CPP	Yes
FUNCINPEC Party	FUNCINPEC	Yes
NRP	NRP	Yes
SAM RAINSY Party	Sam Rainsy Party	Yes

13.10 Private Sector Organizations

13.10.1 Registered Companies in 2008, by District

On private sector at commune and/or district level	Kratie	Chhlong	Chetrborei	Preaekbrasop	Sambor	Snoul	Kratie
Businesses and Companies							
Number of registered agricultural enterprises (except family farms)	1	0	0	0	0	1	0
Number of registered shops, restaurants, transporters and other services	401	n/a	n/a	n/a	n/a	279	122
Number of manufacturing companies	18	6	0	10	0	2	0
Number of registered forestry enterprises	25	6	3	1	8	7	0
Number of registered mining companies	1	0	0	0	0	1	0
Number of financial institutions	8	4	0	1	1	2	0
Number of other commercial institutions	1	n/a	n/a	n/a	n/a	1	n/a
Estimated number of informal enterprises (not registered)	245	n/a	n/a	n/a	n/a	245	n/a
Employment							
Number of people employed in 2008 by companies or any other enterprises	1,437	n/a	n/a	37	n/a	1,400	n/a
Investment							
Amount invested in 2008 by private sector (\$)	n/a	n/a	n/a	n/a	n/a	n/a	n/a
Markets							
Number of markets, operating at least weekly	25	8	10	3	1	1	2

Note: These data are not comprehensive as different companies and business are registered with different departments and not all departments were able or willing to provide detailed information. The number of informal enterprises reflects a rough estimate, made at provincial level and could not be verified.

Source: Unofficially collected at Provincial Level

13.10.2 Farmers in 2008, by District

Credit	Kratie	Chhlong	Chetrborei	Preaekbrasop	Sambor	Snoul	Kratie
Volume of credit provided to farmers in 2008 (\$)	-	n/a	n/a	n/a	n/a	n/a	n/a
Number of farmers receiving credit in 2008	-	n/a	n/a	n/a	n/a	n/a	n/a
Volume of credit provided to companies in 2008 (\$)	-	n/a	n/a	n/a	n/a	n/a	n/a

Note: Please note that these data are not necessarily complete or correct. The data are derived from government agencies at provincial and district level which used different recording systems, did not always have complete data or were, sometimes, less than willing to share their data.

Source: Unofficially collected at Provincial Level

SECTION E: POVERTY DATA

14 Data on Poverty

14.1 Predicted Poverty Rates for 2009, by commune

The **Predicted Family Poverty Rate** is based on a statistical model (robust multilevel mixed effect regression) at village level developed by the NCDD M&E Unit and uses CDB data for making an estimate of the predicted poverty rate (this is: *the portion of total families in the district or commune who are expected to be poor*) for the following year using current year data.

The basis for this predicted poverty rate also uses IDPoor (a project of the Ministry of Planning with technical assistance provided by GTZ) data

Commune	2004	2009
Krakor	31.80%	22%
Kracheh	15.40%	12.80%
Roka Kandal	30.80%	19.50%
Ou Ruessei	37.80%	31.20%
Kaoh Trong	41.10%	35.60%

14.2 Poverty data from survey

14.2.1 Identification of Poor Households Program (IDPoor)

The Ministry of Planning IDPoor Program has developed standardized Procedures for Identification of Poor Households in rural areas. These Procedures are implemented using a participatory and consultative process by sub-national government structures and community representatives.

The IDPoor Program is managed by the Ministry of Planning (MOP), in cooperation with the Ministry of Interior's Department of Local Administration (DOLA). The program is supported by the Federal Republic of Germany, with technical assistance provided by German Technical Cooperation (GTZ). In 2009, AusAID also provided funding support to the Program.

Objective

The IDPoor Program aims to implement the Procedures for Identification of Poor Households in rural areas as widely as possible, in order to provide data on the level of poverty of areas and households that can be used by a large range of institutions and organizations for targeting services and development assistance to poor areas and poor households.

Coverage: During 2007, 2008 and 2009 the IDPoor Procedures have been implemented in 18 provinces (with partial or complete coverage), covering a total of around 7000 rural villages. The MOP and a number of NGO partners who are Health Equity Fund Operators have collaborated in collecting this data from different areas.

Categorization: Identified poor households are classified under two poverty categories: Poor Level 1 (very poor), and Poor Level 2 (poor). Households are classified based on data collected using a standard questionnaire, together with consideration by villagers of these households' special circumstances.

Further information: Please go to the IDPoor Program webpage at www.mop.gov.kh/Projects/IDPoor/tabid/154/Default.aspx

This District has not yet been covered by IDPoor

